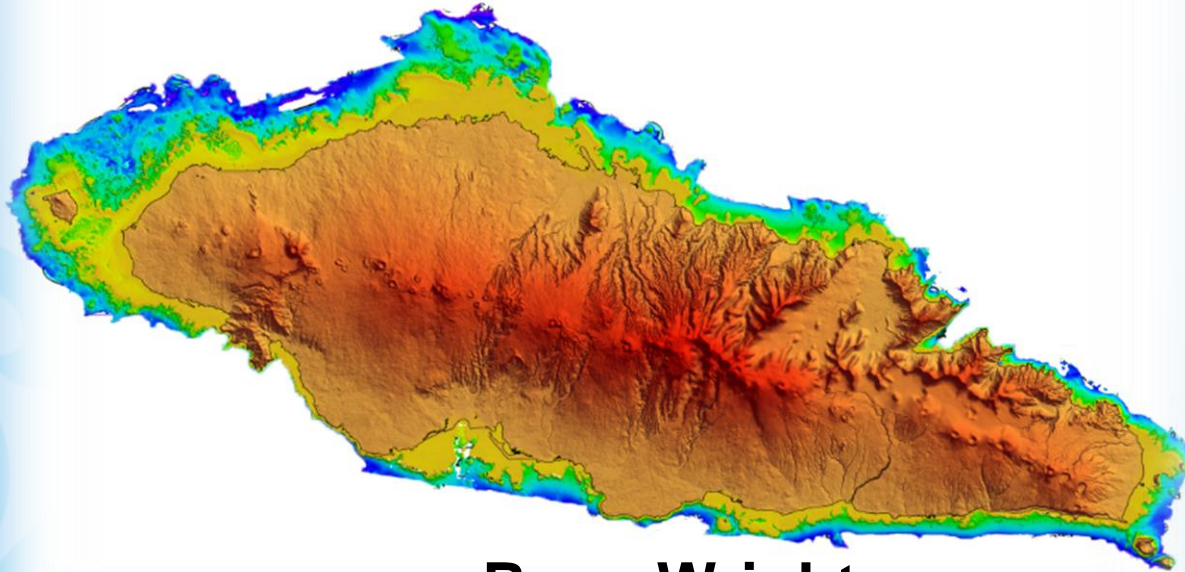


# SPREP Pacific Environment Forum 2017

## Mapping our environment priorities with GIS and Spatial Planning tools



**Ryan Wright**  
**Spatial Planning Officer**

Tanoa Tusitala Hotel Apia, Samoa, September 18, 2017

## Session Overview

Demonstrate the importance of spatial data, spatial planning tools and spatial visualisations to enhance decision-making, environmental assessments, policy, monitoring and reporting.



## Key Challenges

1. Acquisition: Accurate and current spatial data is not always available and needs to be sourced through local or other (potential expensive) means
2. Interpretation and analysis: Spatial data requires expert vetting, interpretation and application specific analysis to produce intelligible and relevant results for decision making
3. Capacity: The need for the required skills and resources to acquire, visualise and interpret this data

## Solutions

1. SPREP is **capacity building** within country, focusing on:

- GIS training for data analysis and visualisations
- GPS training for data collection

2. Working with government and partners to develop and implement **Integrated Spatial Planning** projects (*Pacific Bio-regionalisation Project, MACBIO, PacWaste, BIOPAMA*)

3. Developing **online GIS systems** ([gis.sprep.org](http://gis.sprep.org)) to distribute environment data for decision makers

**giz**



## Key Messages

1. The role that GIS, spatial data and spatial planning tools are playing to address member environmental commitments and priorities

Regional successes include:

- 1<sup>st</sup> PSSA,
- increase in Protect Areas 2.1% > 16.5%,
- real-time monitoring of PIPA and PNA,
- mapping of marine pollution violations & asbestos location and removal

2. Advancements in innovative environment mapping technologies in both the private and public sectors

## Key Speakers Introductions



- |    |  |   |
|----|--|---|
| 1. | <b>Ms. Moeumu Uili</b> , Scientific Technical Officer,<br>and <b>Ms. Czarina Iese Stowers</b> , Senior<br>Terrestrial Biodiversity Advisor, DEC (MNRE) | Mapping Samoa's<br>protected area network<br>using GPS and GIS tools. |
| 2. | <b>Mr. Pawa Limu</b> , Manager Marine<br>Environment Protection, Papua New Guinea  | Development of the<br>regions first PSSA                              |
| 3. | <b>Mr. Anthony Talouli</b> , SPREP Pollution Adviser   | Fishing vessel pollution<br>violations                                |
| 4. | <b>Mr. Unasa Nome Saili</b> , Director of Sky Eye<br>Samoa   | Innovative environment<br>mapping technologies<br>using Drones        |

After, questions and panel discussion