

SPREP

Pacific Environment Forum 2017

From data to impact: strengthening
environmental governance

Paul Anderson, Environmental Monitoring and Reporting Officer

Tanoa Tusitala Hotel

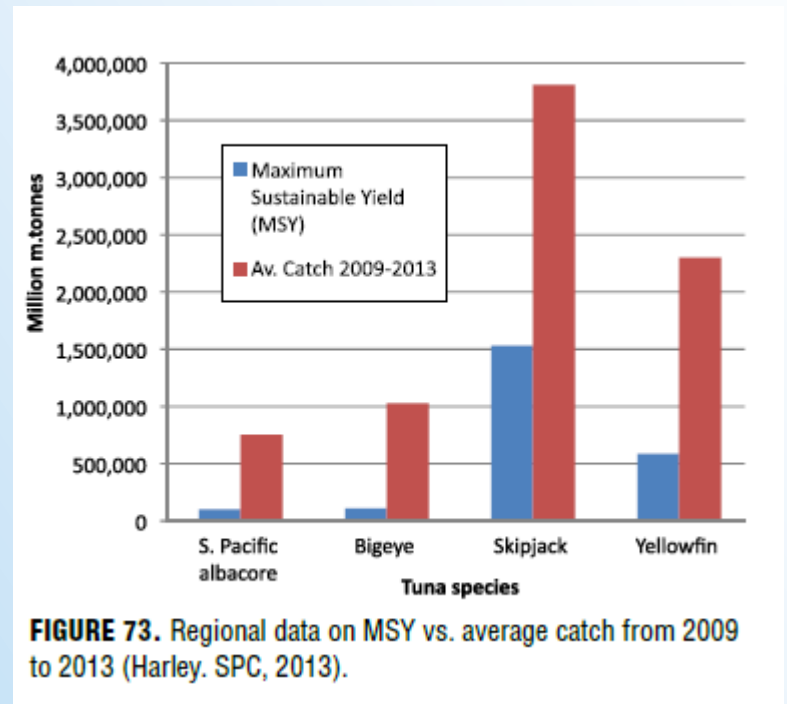
Apia, Samoa

September 18, 2017

Session overview and goal

Overview:

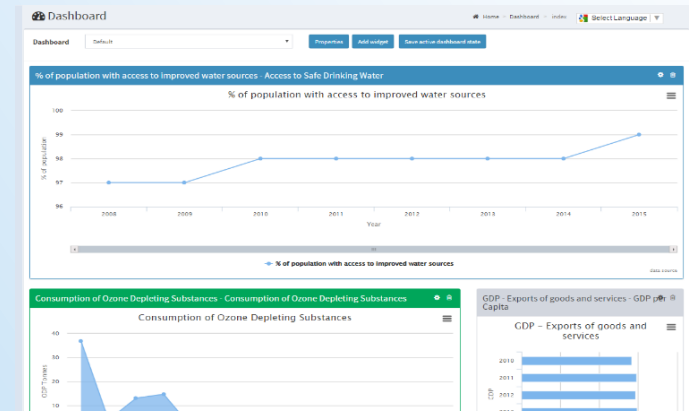
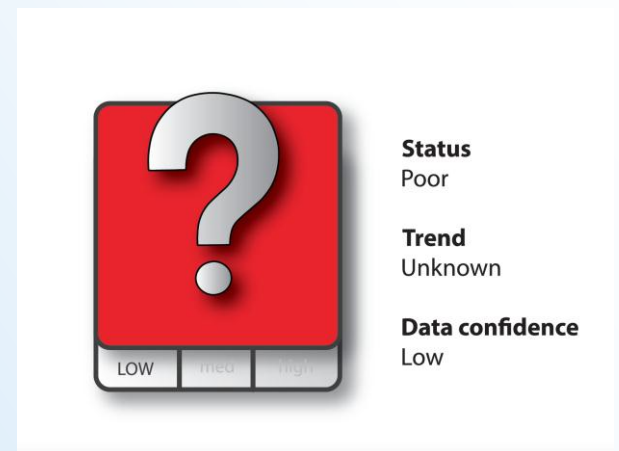
- Discuss and illustrate the importance of environmental data for achieving national impact and supporting data-based decision making.



Good Environmental Governance = Good Environmental Data

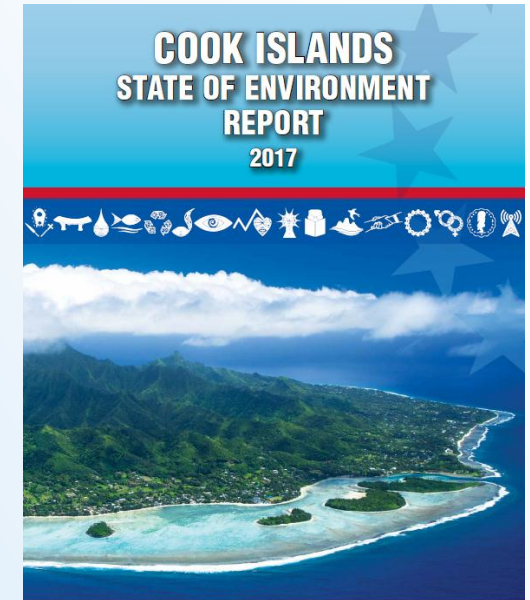
Challenges

- Access: Data is sometimes available in only one format or in one location- an annual report PDF or printed in a library
- Timeliness: Not always available when needed
- Interpretation: Raw data requires cleaning, analysis and interpretation to turn it into information for decision makers.



Good Environmental Governance = Good Environmental Data

Solutions



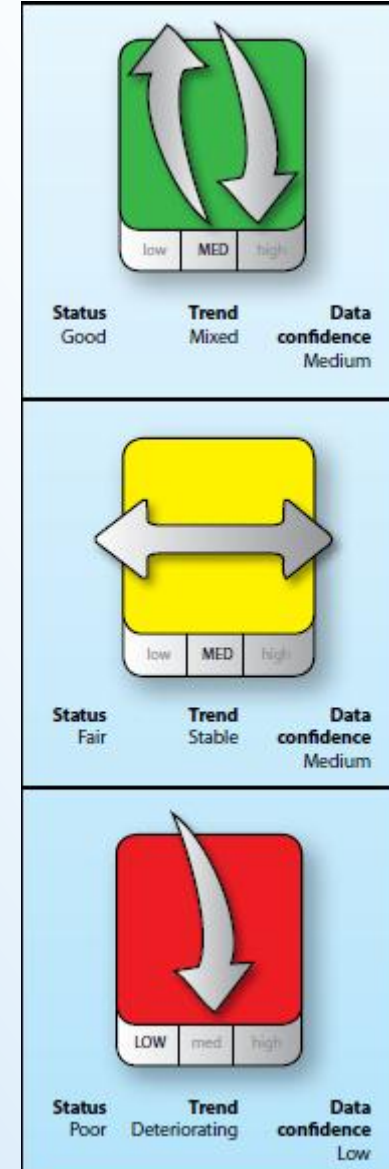
- One way SPREP is working on this issue is supporting enhanced monitoring and reporting – one format for this is the State of Environment Report process (SoE)
- Reliable, reusable indicators for SOE, for NEMS planning, for integration into NSDP, SAMOA pathway tracking and SDGs

Sustainable Development Goals



Key messages

- Impact from the use of monitoring data and reporting - case studies from Pacific Island countries
- Regional example
 - Increased Member commitment to establishing and managing MPAs and other PAs - MPA area 2010: 632,137 km² (2.1% EEZs) to 2016: 5,025,134 km² (16.5% EEZs)
- Link between monitoring, reporting and indicators to national goals and international commitments (MEAs, SDGs)



Speaker introductions

1. **Warwick Harris / Kilom Ishiguro**

- Deputy Director, Office of Environmental Planning and Policy Coordination, Republic of the Marshall Islands
- Technical Expert and Liaison Officer, RM

2. **Josie Tamate**

- Director General of Natural Resources, Niue

3. **Vicki Hall**

- Director, Waste Management & Pollution Control, SPREP

4. **Panel Discussion**