

# MAPPING SAMOAS PROTECTED AREA NETWORK

*The use of available tools and technology to assist in environmental monitoring, reporting, planning and decision making.*

**Presented by:** Czarina Stowers and Moeumu Uili  
Division of Environment and Conservation  
Ministry of Natural Resources and Environment

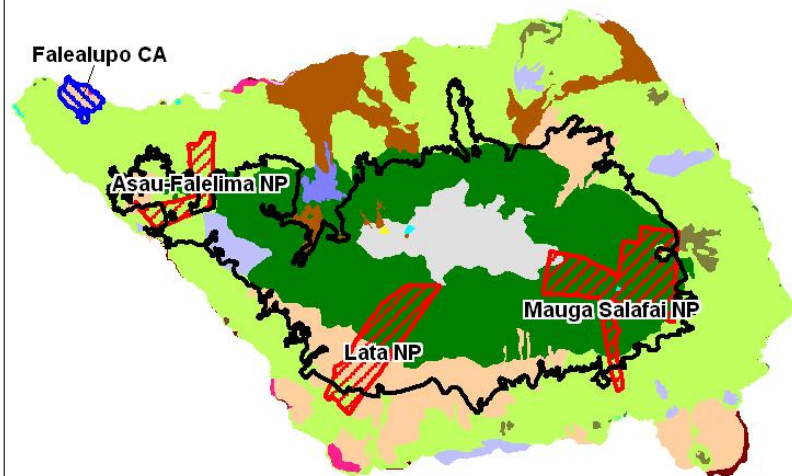
# Outline

1. What's been done
2. Current situation
3. Challenges
4. What needs to be done

# 1. What has been done.

Year	Study	Methodology	Outcome	Author
2017	BIOBAMA workshop	GPS/GIS tool	TOR-PASC (draft) Initial mapping works for Reserves	MNRE and SPREP
2014/15	Mapping of catchment areas under rehabilitation programs	Ground truthing/QGIS	Map of rehabilitation catchment areas	WRD-MNRE
2012	Mapping Marine Protected Area	GIS	Updated maps	MNRE/SPRE P/CI
2010	Mapping Mangrove areas for Samoa – MESCL Project	Ground truthing,	Mangrove area maps	MESCL/MN RE/CI
2008	Key Biodiversity Area (KBA) assessment for Samoa – MNRE and CI	GIS/ Literature review	KBA booklet Gap Analysis	MNRE and CI
2004	Strengthening the Institutional Capacity of the Samoa Forestry Division to effectively plan and manage forest resources	Aerial photo interpretation and ground truthing	Samoa Forest SAMFRIS report and database	James Atherton /FAO
1993	A geographical-ecological model for landscape conservation development in Samoa	Aerial photographs, site visits, literature review	Report produced	Pearsall
1991	Terrestrial ecosystem mapping for Samoa	Aerial photographs, site visits, literature review	Terrestrial ecosystem mapping for Samoa	Pearsall and Whistler

# Samoa Terrestrial KBAs overlayed onto National Parks, Reserves, MPAs and Community Conservation Areas



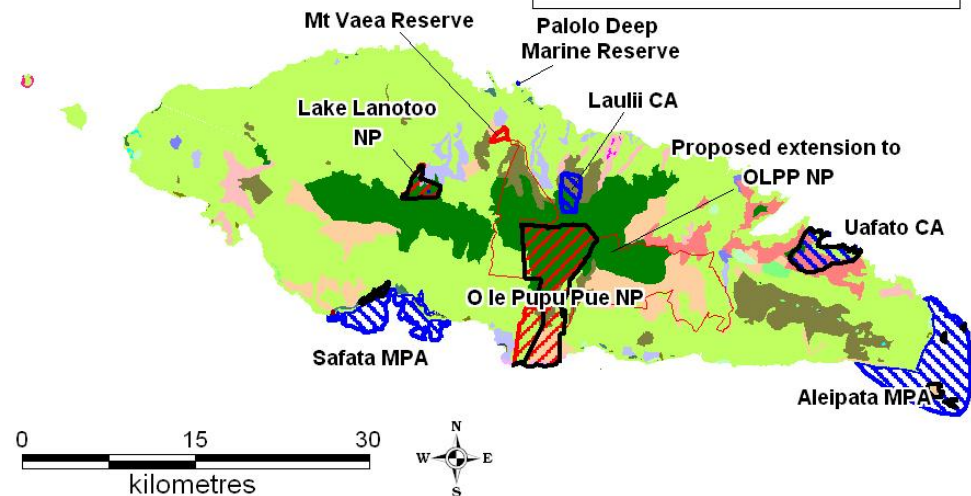
## Legend

-  Samoa Terrestrial KBAs
-  National Park/Reserve
-  Community managed site

## Ecosystem

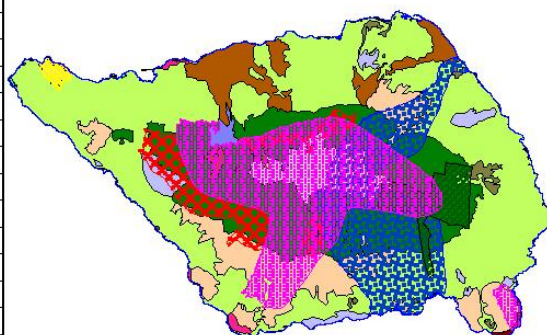
(from Pearsall and Whistler 1991)

-  Cloud forest
-  Coastal forest
-  Fernland
-  Grassland
-  Herbaceous Marsh
-  Littoral forest
-  Littoral scrub
-  Lowland forest
-  Mangrove forest
-  Montane forest
-  Ridge forest
-  Swamp forest
-  Secondary forest
-  Volcanic succession
-  Non-native forest
-  Lake
-  Disturbed coastal
-  Disturbed herbaceous marsh
-  Disturbed littoral forest
-  Disturbed lowland forest
-  Disturbed mangrove forest
-  Disturbed Ridge forest
-  Disturbed swamp forest
-  Disturbed secondary forest



# Samoa Terrestrial National Parks, Reserves, Community CAs and Proposed Sites

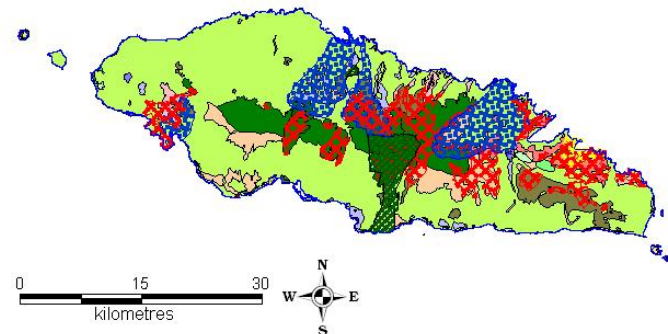
Name_of_site	Conservation_Type
Falealupo CA	Community Conservation Area
Uafato CA	Community Conservation Area
O le Pupu Pue NP	National Park/Reserve
Falefa Catchment	Catchment Area
Vaisigano Catchment	Catchment Area
Fuluasou Catchment	Catchment Area
Faleaseela Catchment	Catchment Area
Salelologa Reserve	Proposed National Park/Reserve
Mt Vaea Reserve	National Park/Reserve
Moliolio Catchment	Catchment Area
Vaiola/Faleata Catchment	Catchment Area
	Conservation Area (FD)
	Conservation Area (FD)
	Conservation Area (FD)
	Conservation Area (FD)
	Conservation Area (FD)
	Conservation Area (FD)
	Conservation Area (FD)
	Conservation Area (FD)
	Conservation Area (FD)
	Conservation Area (FD)
	Conservation Area (FD)
	Conservation Area (FD)
	Conservation Area (FD)
	Conservation Area (FD)
	Conservation Area (FD)
	Conservation Area (FD)
	Conservation Area (FD)
	Conservation Area (FD)
	Conservation Area (FD)
	Conservation Area (FD)
Saanapu-Sataoa CA	Community Conservation Area
Lake Lanotoo	National Park/Reserve
	Conservation Area (FD)
Mt Salafai	National Park/Reserve
Savaii Rainforests	Proposed National Park/Reserve
488	island



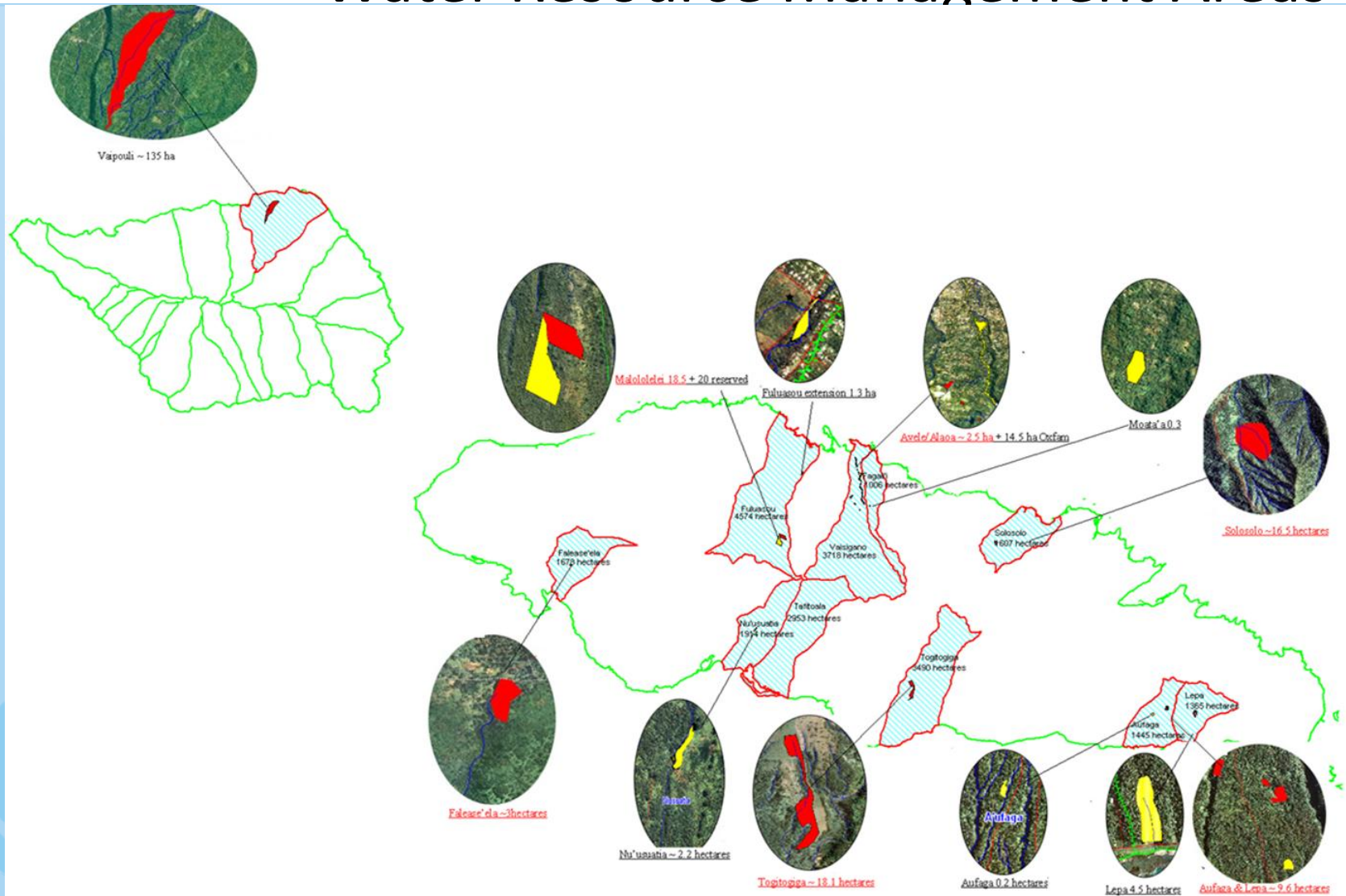
Samoa\_Conservation\_Areas Legend



Ecosystem  
(from Pearsall and Whistler 1991)







## 2. Current situation

- Completed national Protected Area Workshop for stakeholders
- Proposed establishment of National Protected Area Steering Committee – Draft TOR in place
- Training in using GPS to map important areas for management
- QGIS training for MNRE staff by SPREP



## Team GPS training





## 3. Challenges

- Human resources
  - Limited number of staff
  - Capacity of staff to monitor and implement actions
- Funding availability
- Data and information management

## **4. What needs to be done**

- Approve and establish National Protected Area Steering Committee
- Develop system for collation and validation of PA data and information.
- Proclamation for existing reserves to be legally protected
- Produce map for current PA not mapped
- Review and update existing maps for PA of Samoa
- Training for staff using GIS tools to monitor PA
- Implement recommendations from past survey/assessment reports above