



Pacific Adaptation to Climate Change Inception Meeting

29th – 3rd July 2009

Country: Vanuatu



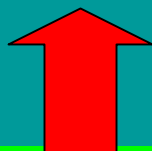
BRIAN PHILLIPS & DENNIS ALVOS

Introduction

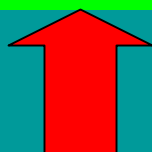
Linking PACC with National Sustainable Development Strategies



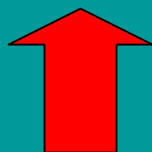
Priority Actions Agenda
(PAA)



Supplementary Priority
Actions Agenda (PAA)



Actions Agenda 2009-
2012



PACC

Introduction

Linking PACC with National Sustainable Development Strategies

Priority Actions Agenda (PAA)

Improving the lives of the people in rural areas by improving service delivery, expanding market access to rural produce, lowering costs of credit and transportation, and ensuring sustainable use of natural resources;

Raising private investment by lowering obstacles to growth of private enterprise including lowering costs of doing business, facilitating long-term secure access to land, and providing better support services to business;

Increasing equity in access to income and economic opportunity by all members of the community. Specific areas of focus include: enabling universal access to primary education by school-age children, universal access to basic health services, and inducing increased employment opportunity for those seeking work.

Supplementary Priority Actions Agenda (PAA)

Private Sector Development and Employment Creation;

Macroeconomic Stability and Equitable Growth;

Good Governance and Public Sector Reform;

Safe, Secure, and Resilient Vanuatu

Primary Sector Development (natural resources and the environment);

Provision of Better Basic Services; especially in rural areas;

Education and Human Resource Development; and

Economic Infrastructure and Support Services.

Actions Agenda 2009-2012

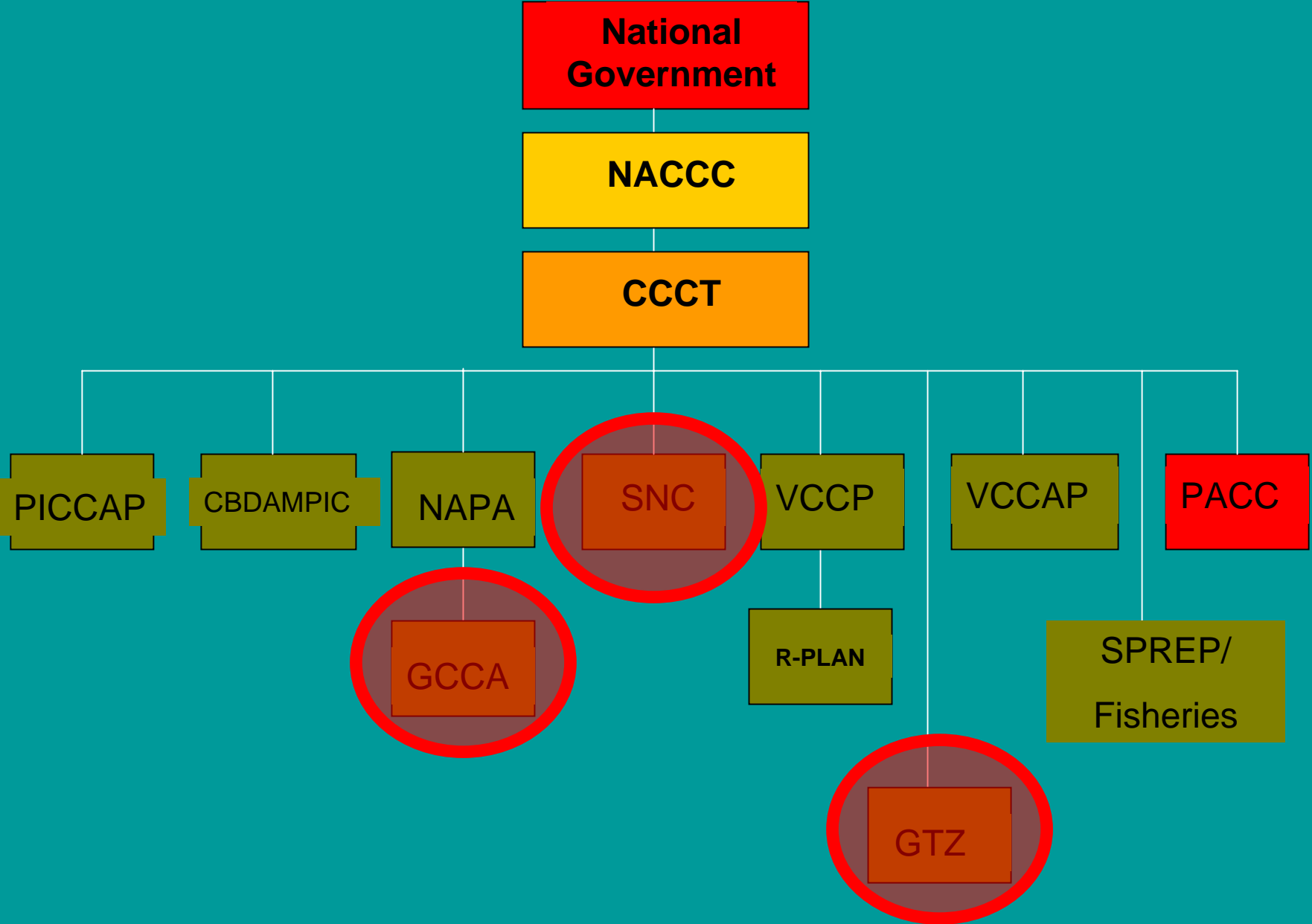
13 policy priorities

Support the productive sectors as an engine for investment, economic growth and employment

Equitable and sustainable development of land while ensuring the heritage of future generations

Reliable and accessible infrastructure service

Adaptation Projects & Synergies with PACC



SNC

- Vulnerability & Adaptation Assessments
- Climate Change Modeling
- Improved Climate Baselines



GTZ

- Review of Forest Policy
- Review of Agriculture Policy
- Review of Land Use Policy

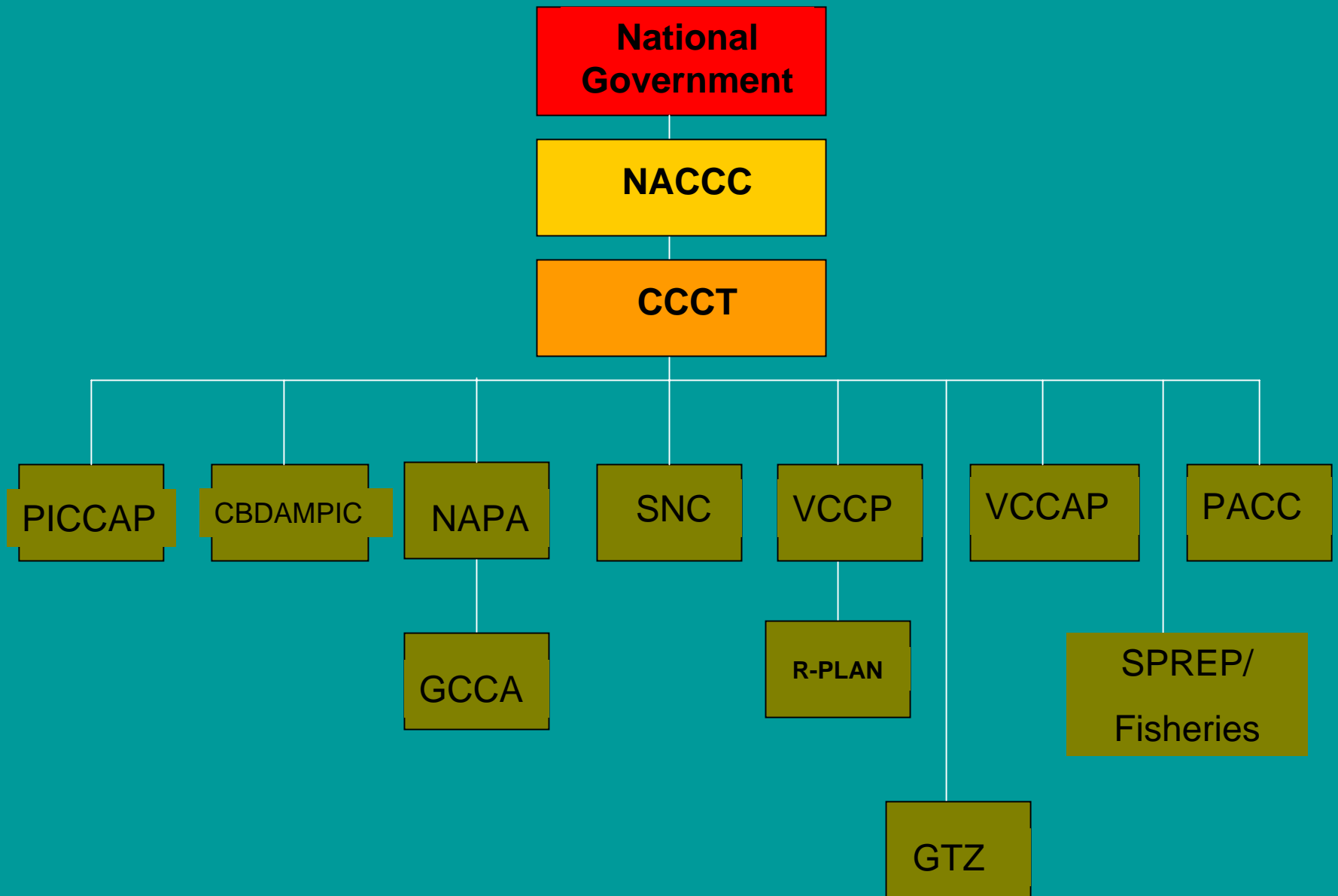


NAPA

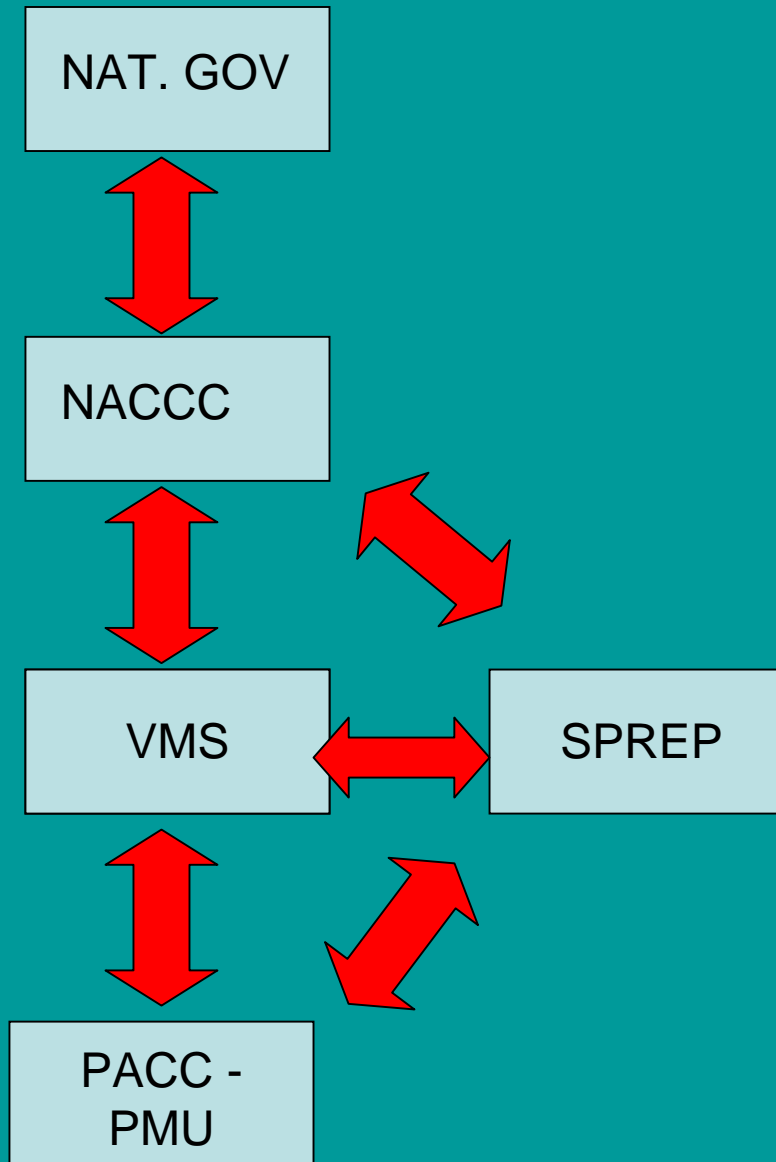
- **Agriculture & food security,**
- **Water resource management,**
- **Sustainable forest management,**
- **Community based marine management,**
- **Sustainable tourism**



Institutional Arrangements



Institutional Arrangement





PACC Focal Point – Vanuatu
Meteorological Services



PACC Implementing Agency –
Public Works Department
(PWD)



NACCC Provides Overall
Oversight

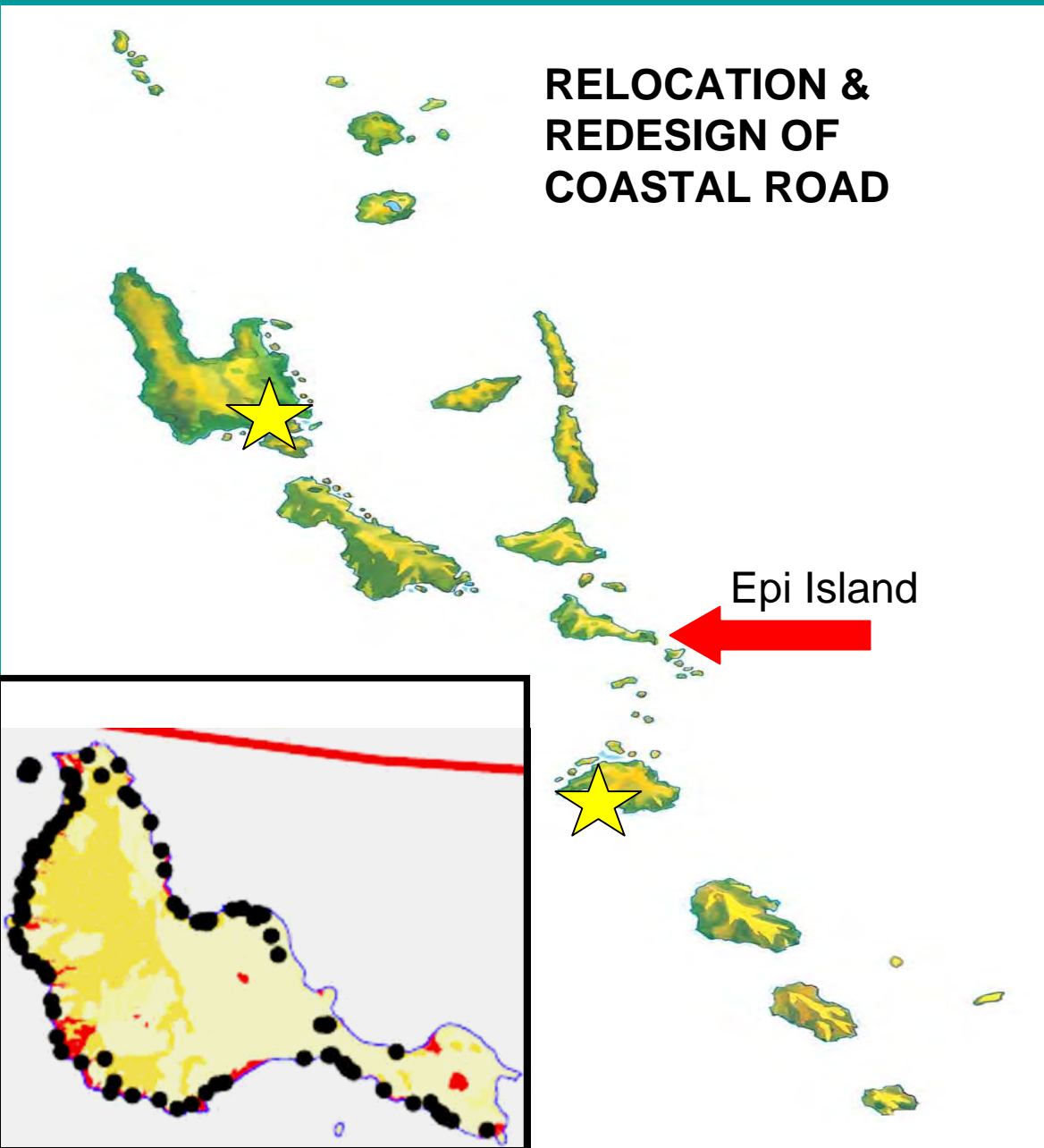


Co-financing



- Vanuatu Gov. pledged USD 2.9 million as co-financing support for the PACC project.
- Development activities in the coastal management and associated infrastructure sector the government will use as parallel co-financing to build resilience to climate change under the PACC
- US Millennium Challenge Funds – VT9 billion / USD 64 million

Pilot Demonstration Area & Project



RELOCATION & REDESIGN OF COASTAL ROAD

- 4554 Population
- Subsistence/Semi-subsistence farming
- 41% Kava SHEFA production
- Major cattle producer

- 66 Km of Road
- Mostly coastal
- Cyclones/inundation
- Erosion of roads
- Redesign & Relocation of road sections

Challenges

- Late disbursement of funds





TAV!