

Community Resilience: Locally Managed Marine Area (LMMA) Network+ Experiences



Alifereti Tawake,
Council Chair, LMMA Network
December 4th, 2013

Work carried out with support of:



What is Resilience?

.... The capacity to thrive in the face of challenges.

....The capacity of a social-ecological system to tolerate disturbances and recover...

... The ability of individuals and the group to adapt to changing conditions through learning, planning and re-organisation ..

Building Resilience for a Changing Pacific

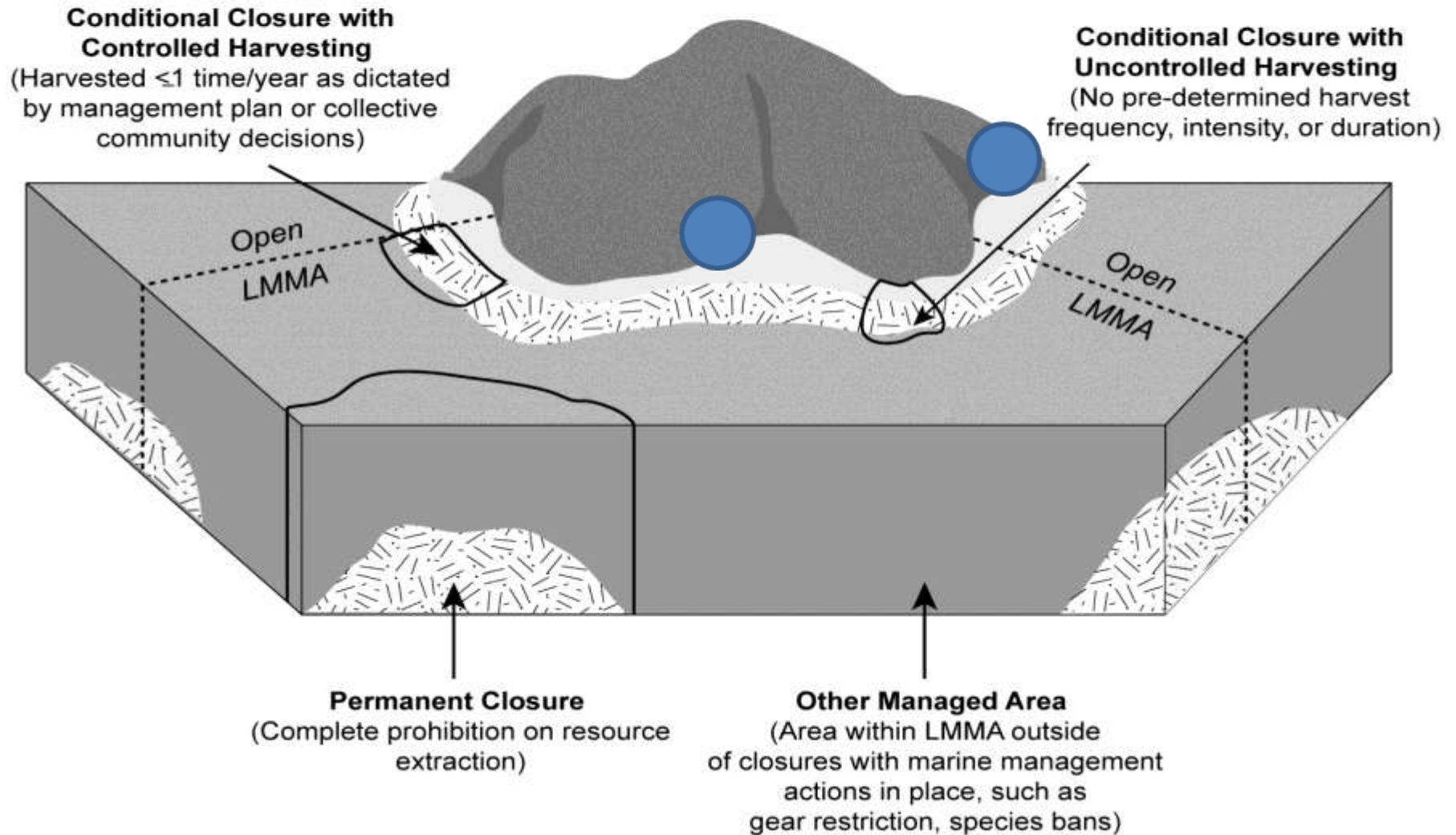
1. Community at the heart of nature conservation + protected areas
2. Building resilience needs to be intentional strategy
3. Resilience lens to plan for the future

The Locally-Managed Marine Area Network

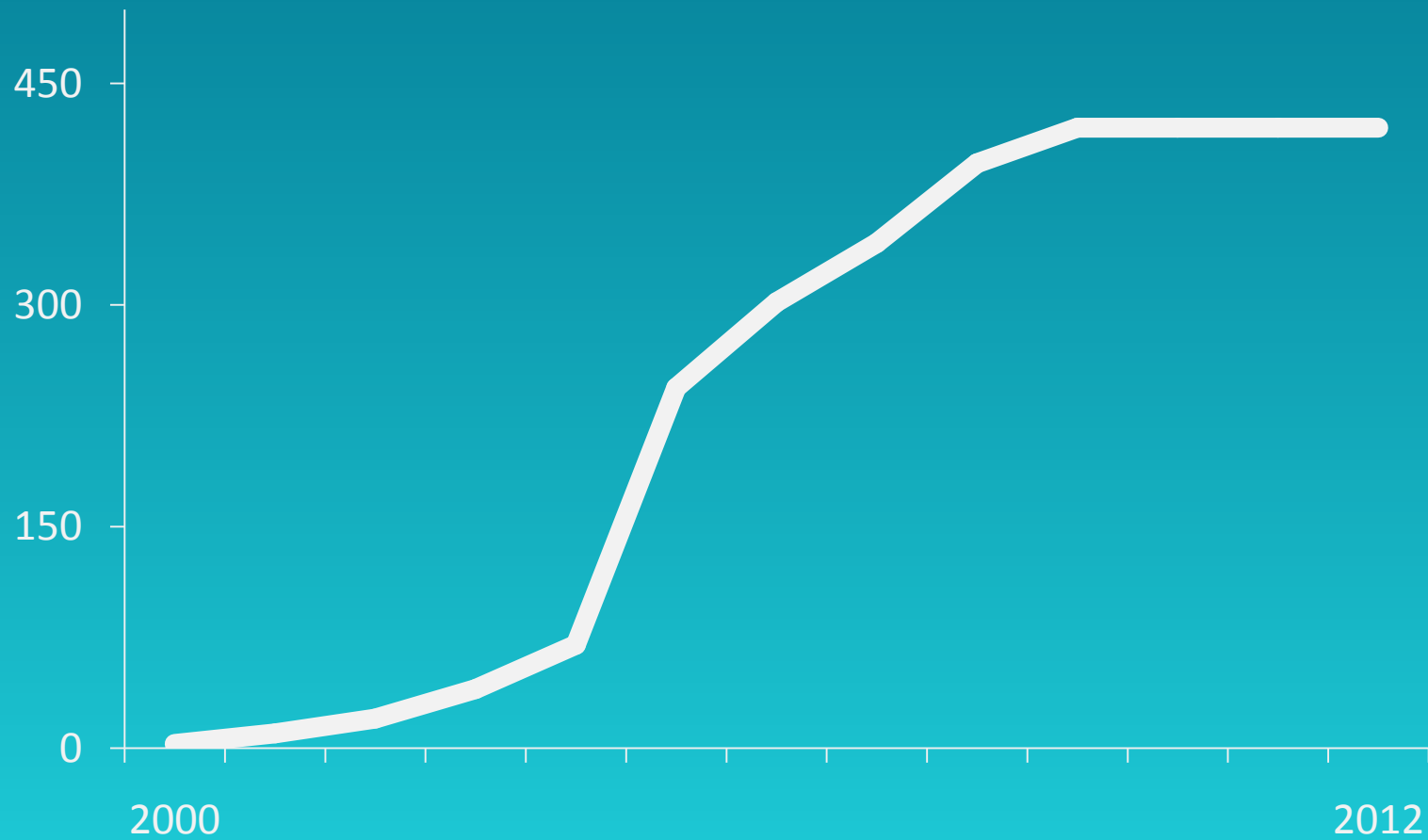
National networks: Fiji, Indonesia, Philippines, Palau, Pohnpei, Papua New Guinea, Solomon Islands



Support to – Vanuatu, Cook Islands, Tuvalu, Marshall Islands, Samoa, Tonga, American Samoa, Kiribati, Timor Leste, Hawaii, Yap, Chuuk, French Polynesia, Colombia, Vietnam, Madagascar, Mauritius, Torres Straits, Australia, Aotearoa (New Zealand) and others



Rapid growth of LMMAs



LMMAs in Asia Pacific

There are

420

L MMA sites

Including over

636

Participating
villages

Across

7

Countries

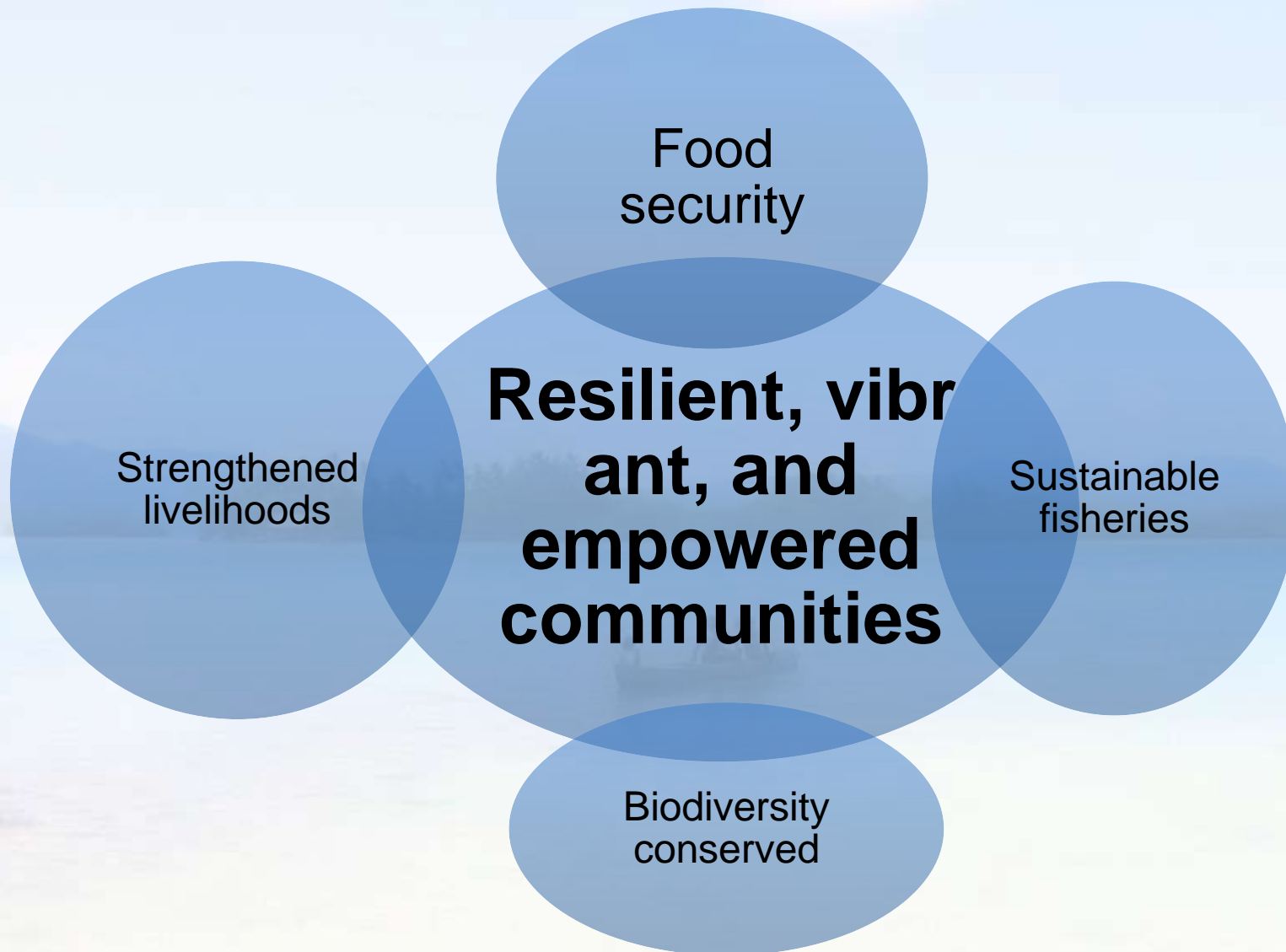
Covering nearly

13,000km²

Shared Vision- 2000

- Healthy marine ecosystems and protected biodiversity
- Sustainable development
- Understanding biological and socio-economic responses to LMMAs

Shared Vision-2011



The LMMA Network today...



A **New Council and Governance** to ensure leadership from the community and national level

Resilience Thinking

1. We exist in linked social and ecological systems.

Socio-ecological frameworks exists in the Pacific

- ✓ Land, sea and people with culture and traditional knowledge are inseparable
 - Fiji: Vanua Framework, Hawaiian *ahupua'a*, the Yap *Tabinau*, Solomon Islands *Puava*, Aboriginal Australian *Country*, Australian Torres Strait Islanders *Ailan kastum*
 - Spiritual Beliefs (Faith) and Values connected to our natural resources (tree, fish, birds, turtle fishing rules, gods, marine invertebrates etc)
- ✓ Pre-scientific ecosystem–based management practices are still being used today in Oceania

Resilience Thinking

1. We exist in linked social and ecological systems.

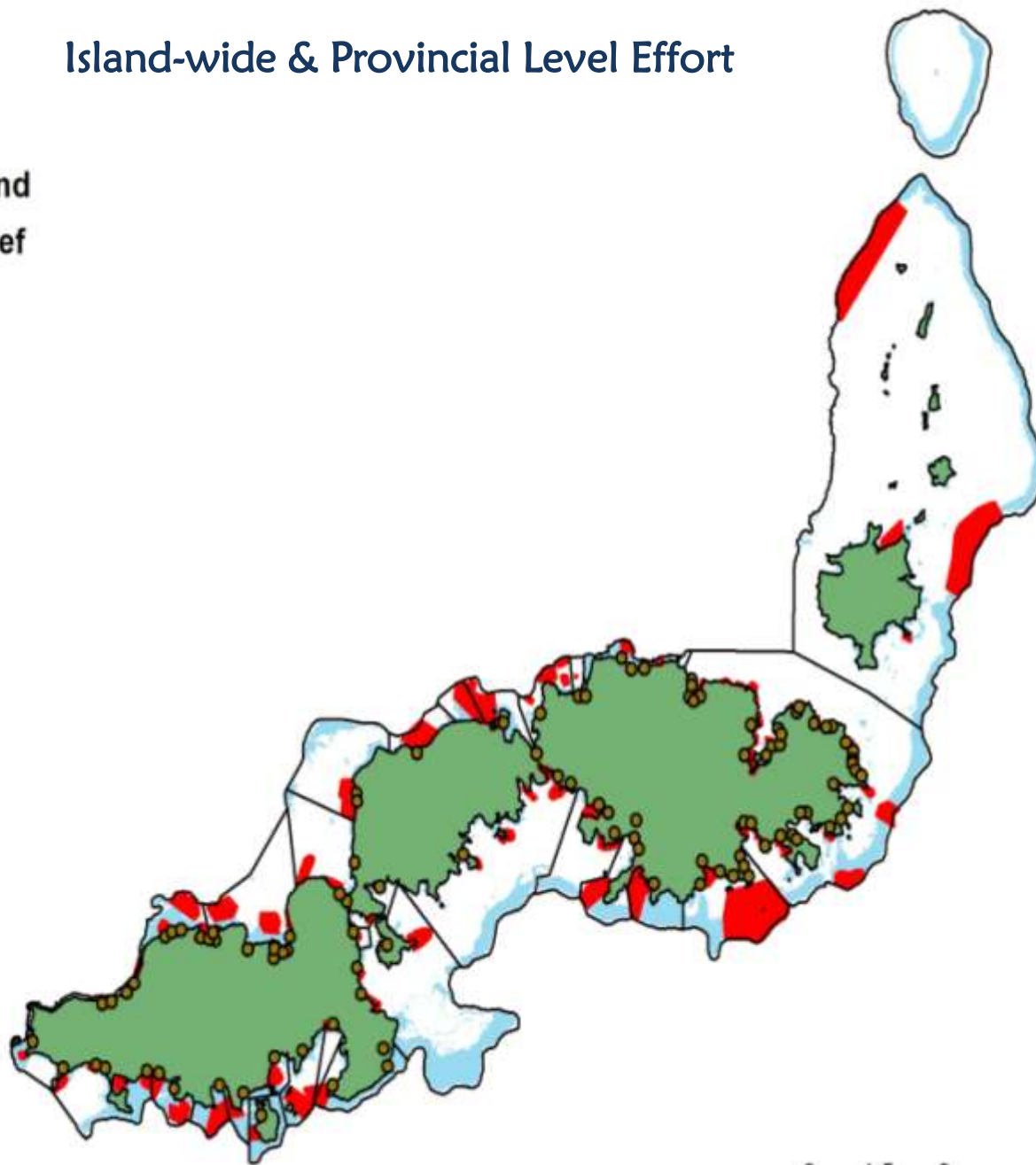
Diversity of strategies implemented by the locals

- ✓ Start small (vanua) and scale up; LMMA
- ✓ Overfishing, urgent ... entry to communities
- ✓ LMMA approach helps organise communities
- ✓ *Yaubula* Management Plans – 360 degrees view
 - ✓ Awareness
 - ✓ LMMAs
 - ✓ Forest reserves, Sacred Sites
 - ✓ Farming practices
 - ✓ Waste Management
 - ✓ Governance & Leadership
 - ✓ Income generation – sea weed farming
 - ✓ Coastal protection
 - ✓ Climate change adaptations
 - ✓ Solar lighting



Island-wide & Provincial Level Effort

- Village
- Qoliqoli
- Tabu
- Kadavu Island
- Exposed Reef



0 4.5 9 18 27 36 Km

Local Management Efforts



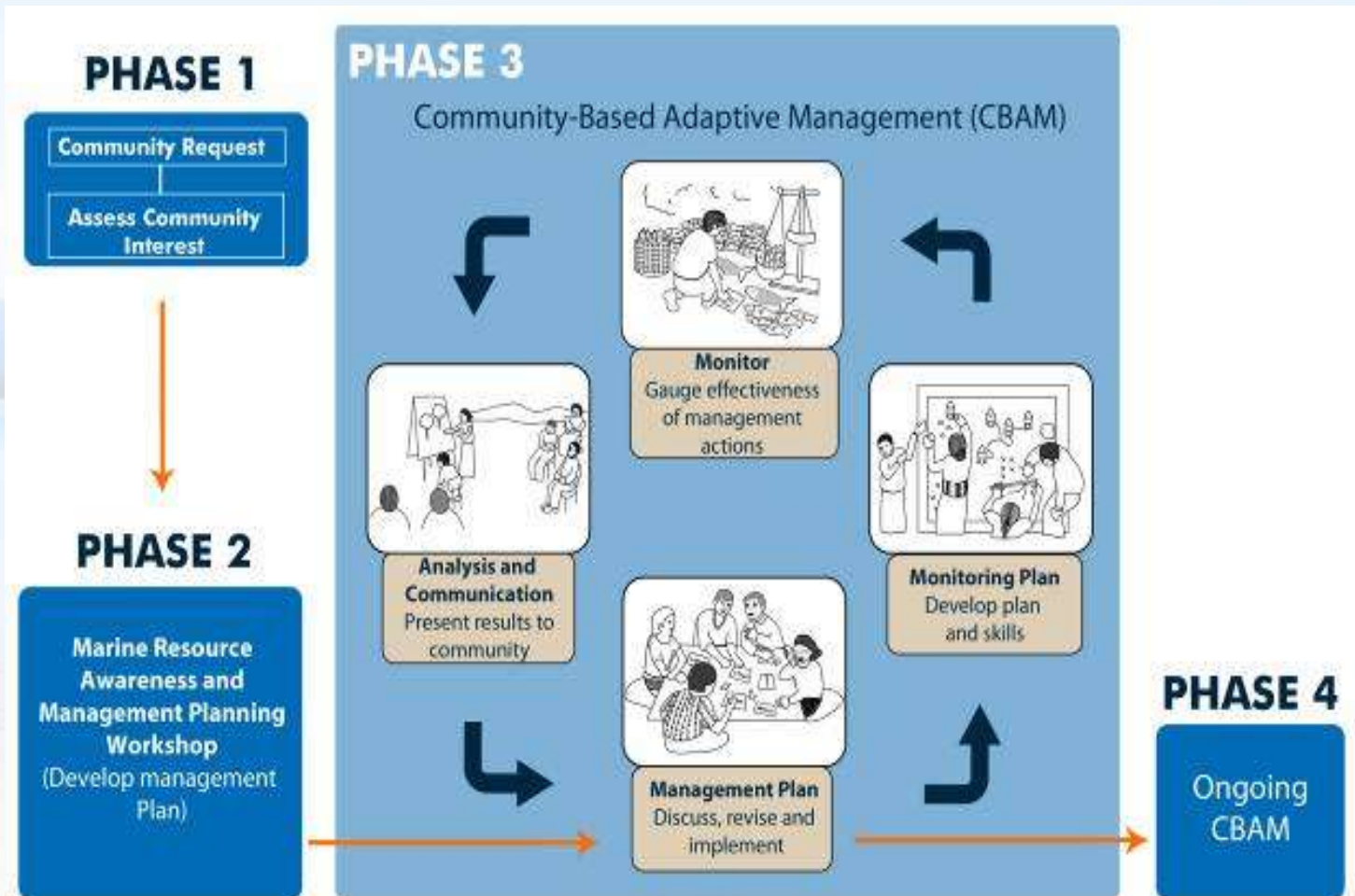


Adopt-a-tree for
reforestation



Resilience Thinking

2. Appreciating that nature is a complex adaptive systems.



Resilience Thinking

2. Appreciating that nature is a complex adaptive systems.

Build adaptive capacity of the locals to respond to emerging threats

- ✓ Champions – community, provincial, national
- ✓ Key Influencers- Chiefs, Pastors, Retired civil servants, Teachers, Roko Tuis, Commissioners



Resilience Thinking

3. Resilience is key to sustainability



Conclusion

- Local innovation breeds adaptations and resilience leading to resilient nature conservation outcomes.
- Recognitions through Awards
 - For Fiji LMMA Network
 - ❖ *United Nations Equator Initiative, 2002*
 - ❖ *Whitley Award for Nature, 2004*
 - ❖ *World Summit Award, 2007*

Questions for discussion

1. What will it take to scale up this sorts of networking efforts to cover all Pacific Island communities?
2. How do we engage national governments and regional organisations better?

An aerial photograph taken from the perspective of someone inside an airplane, looking out over a tropical coastline. The image shows a white sandy beach curving along the edge of a turquoise lagoon, which is bordered by a dark green reef. The deep blue ocean extends to the horizon under a clear sky. The wing of the airplane is visible at the top of the frame.

Vinaka Vakalevu

Thank you