

# 17<sup>th</sup> SESSION

## PACIFIC ISLANDS CLIMATE OUTLOOK FORUM (PICOF-17)

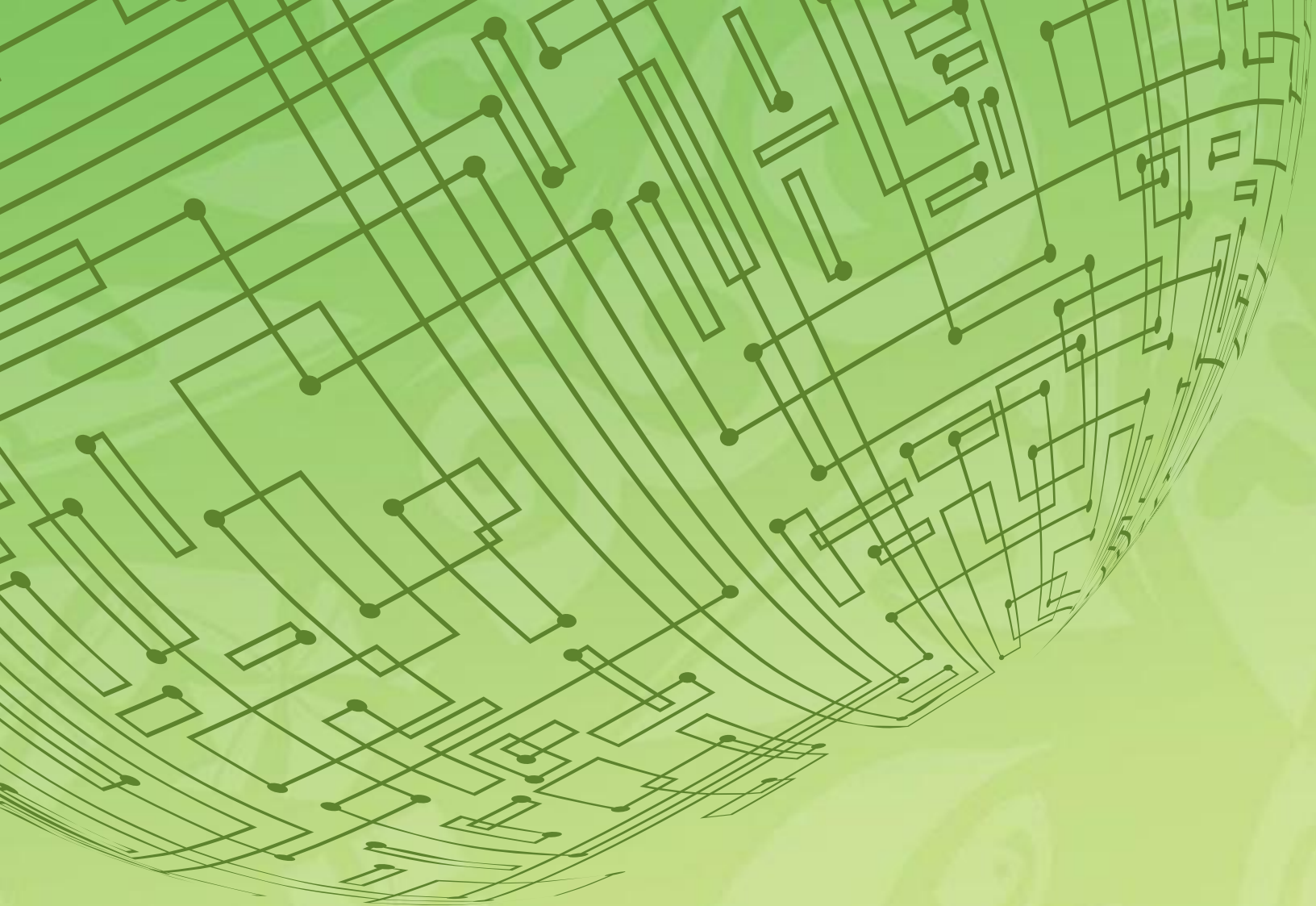
# 22 – 23 October, 2025

Port Vila, Vanuatu



**PACIFIC REGIONAL  
CLIMATE CENTRE NETWORK**

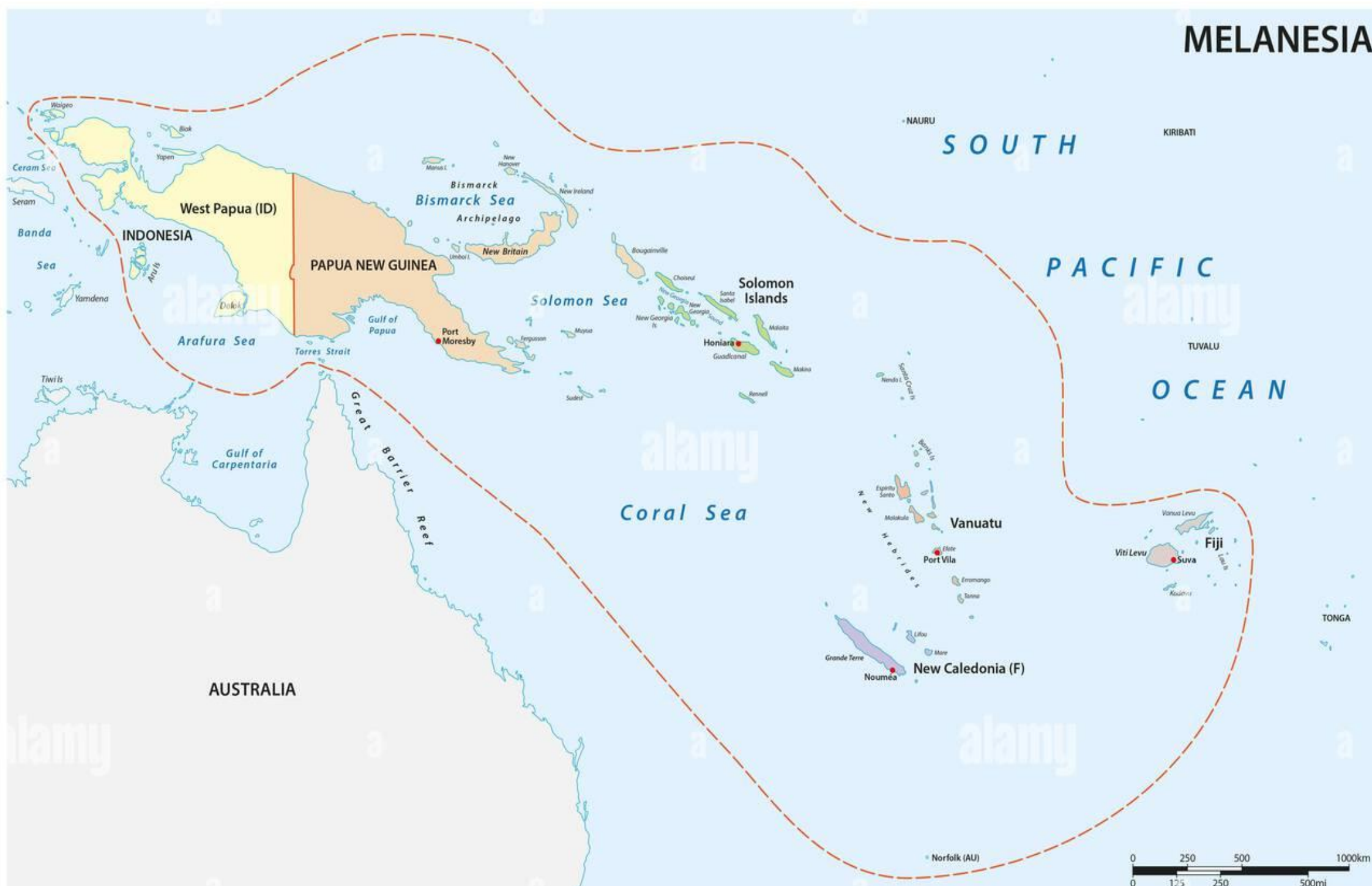
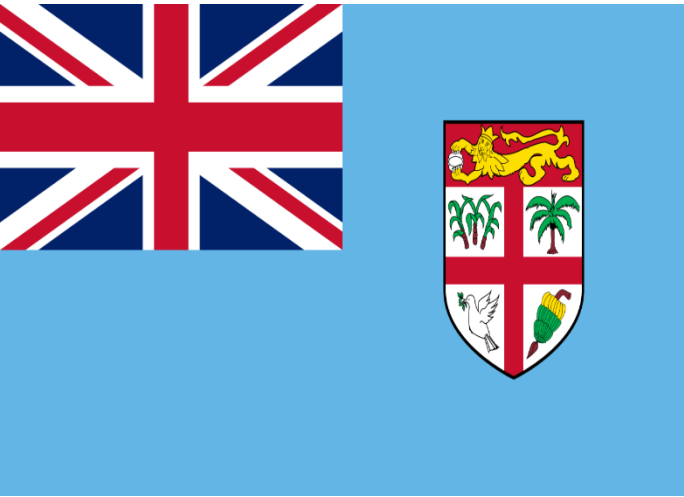




# MELANESIAN COUNTRIES

## Climate Impact Report





# Summary

## ENSO Status

- ✓ ENSO neutral
- ✓ Weak La Niña

## Regional situation;

- ✓ Mostly heavy rainfall events due to negative IOD in PNG and low-pressure system Tropical Cyclone in Fiji
- ✓ Prolonged dry conditions especially in Vanuatu and New Guinea Islands of PNG regions
- ✓ Earthquakes
- ✓ Heat waves impacts in New Caledonia
- ✓ Rainfall induce landslides in Solom Islands

## Common Hazard

- ✓ Flooding
- ✓ Landslide
- ✓ Earthquake
- ✓ Drought
- ✓ Heat wave
- ✓ Marine heatwave
- ✓ Hailstorm
- ✓ Bush fire

## Impacts

- ✓ People's daily livelihoods have been affected the most
- ✓ Water and food security are main concerns as these are basic survival needs
- ✓ Transportation has also been a key sector affected due to poor road conditions and flood
- ✓ Schools have been affected
- ✓ Closure business houses

	6 months period	Country	ENSO Phase	Synoptic situation	Type of Hazards	Impacts	Sectors affected	Number of deaths	
	January to July	Fiji	Neutral	Trough of low pressure brought heavy rainfall and thunderstorms -Tropical Cyclone Tam associated rainfall	-Landslide  Flooding	A danger for motorists and pedestrians Schools closed Flooded villages	-Transportation -Eductation	0	
	January to July	New Caledonia	Neutral	-High sea surface temperatures TC Tam associated rainfall	Flooding Marine Heat wave Heat wave	Thermal discomfort Coral bleaching Affected road networks	Agriculture Tourism Transport Fisheries	0	
	January to July	Solomon Islands	Weak La Niña	A Trough south of the Solomon islands and northwesterly winds in April creating heavy rainfall A trough south of Solomon islands link to a tropical low located west-southwest of Rennell and Bellona province and moving towards the south in May leading to heavy rainfall	Landslide Flooding & Inundation	Closure of road network Affected food and security agriculture	Infrastructure Transport Agriculture Tourism	0	
	May to October	Vanuatu	Neutral	Trough Persistent High-pressure systems.	Hail Storm Bushfire Drought	Damage to crops Water sources drying up Loss of vegetation	Food Security/Agriculture	0	
	May to October	Papua New Guinea	Neutral	Prolong dry periods IOD induced rainfall Earthquake	Drought Flooding	Shortage of water and food supplies Destroyed food gardens, homes & properties,	Agriculture, transport systems Education Infrastructure	0	





# Flooding events in Fiji

Source: FijiVillage



Inundation of part of the main road near Rabulu village, Western Division, 18<sup>th</sup> April.

Source: Fiji National Fire Authority



The National Fire Authority evacuating residents from a home in Naidiridiri settlement, Central Division, 17<sup>th</sup> July.

Source: The Fiji Times



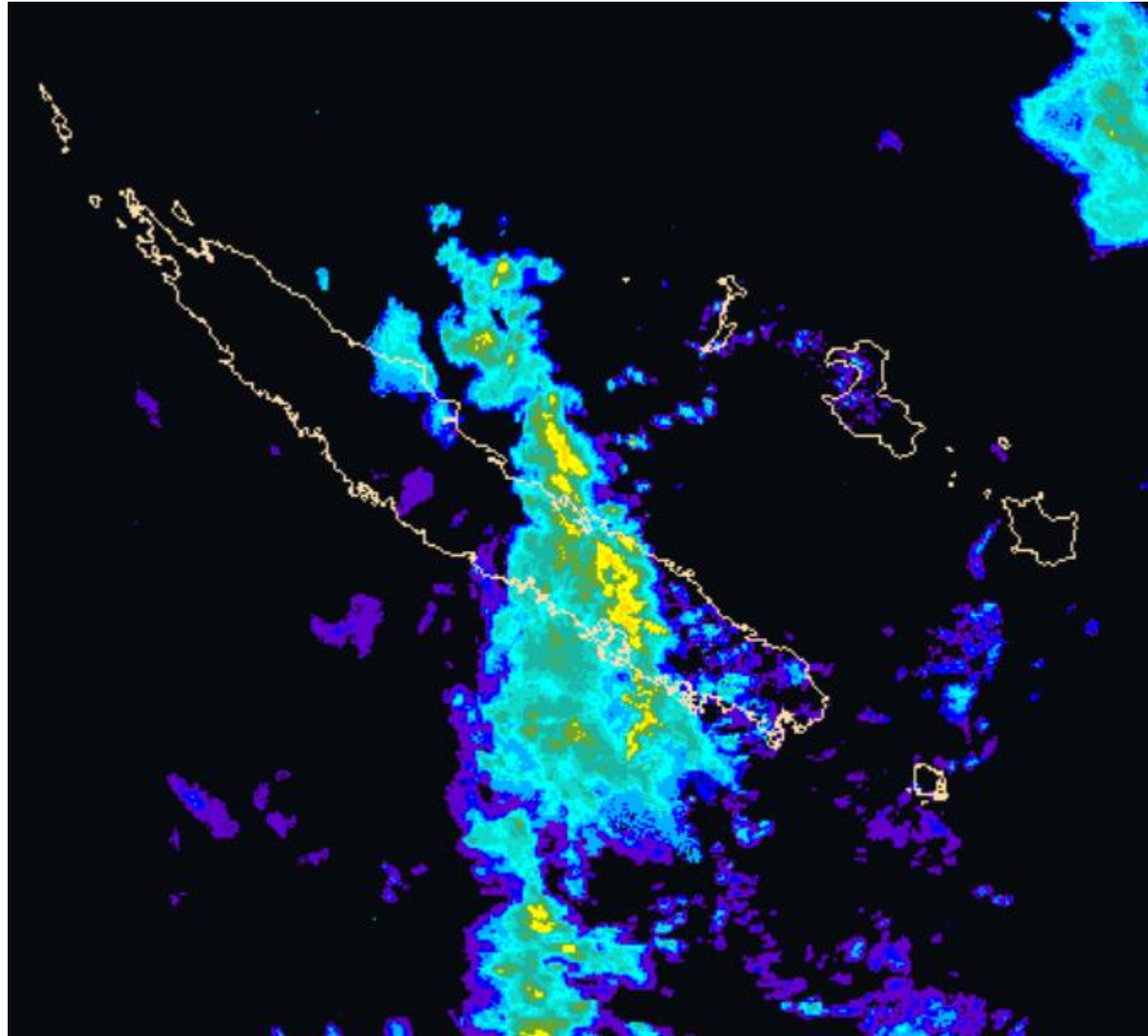
Flooding of Nadaro Village, Tailevu, Central Division, 17<sup>th</sup> July.



# Flooding events in New Caledonia

Heavy rains and stormy episode from 12<sup>th</sup> to 15<sup>th</sup> April:

## New Caledonia



Radar mosaic of precipitation on April 15, 2025, at 2:30 a.m., showing the convergence line causing heavy precipitation between Boulouparis and Canala.

Source: Météo-France New Caledonia

- In 4 days :
- Three months of rain in Boulouparis and Canala.
  - One month and a half of rain in Ouvéa and La Foa.



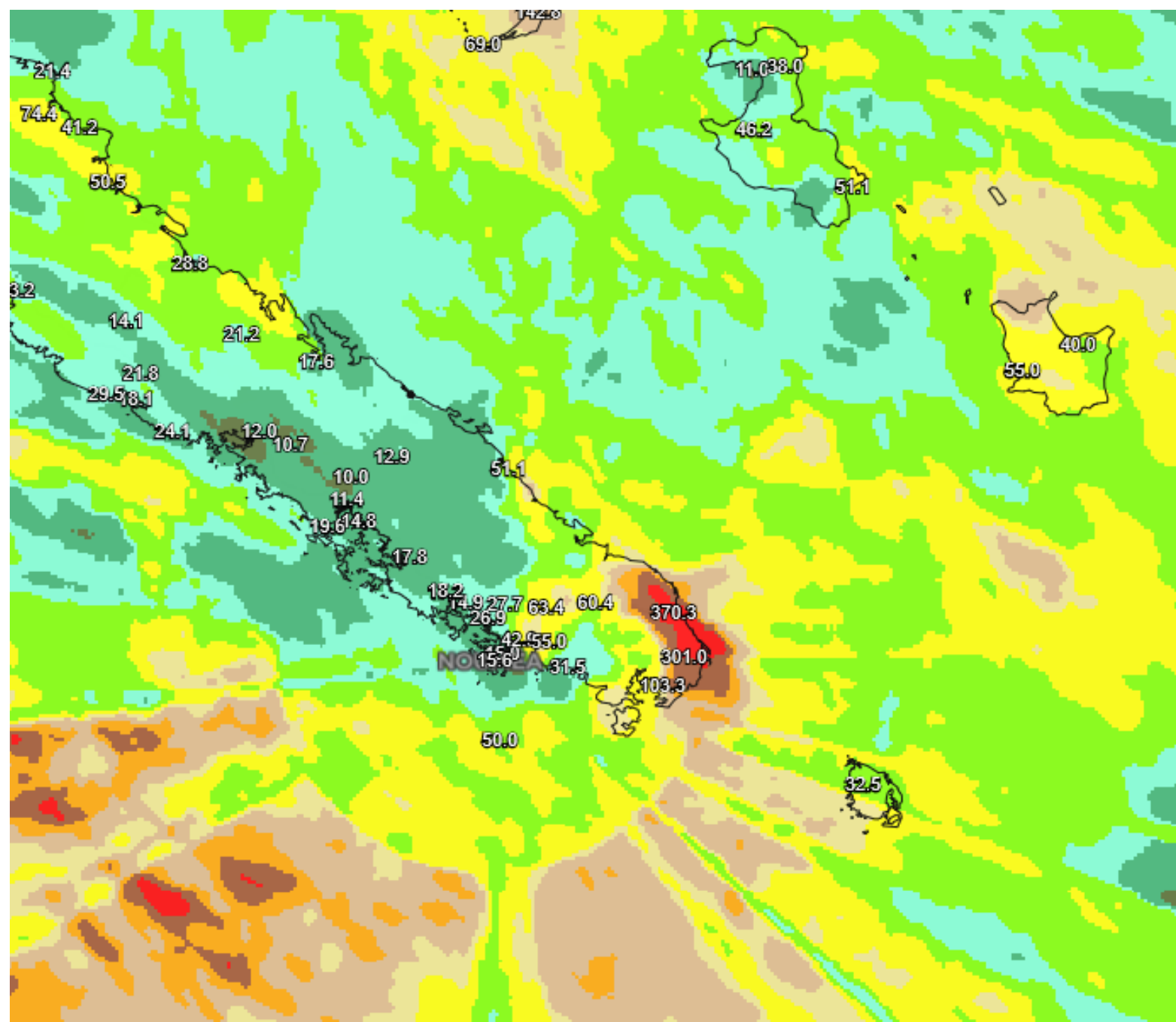
La Foa. © LNC



© Radio Cocotier



# Flooding in New Caledonia- Torrential rain in Yaté on 25<sup>th</sup> April 2025



In Yaté :

- 175 mm in 2 hours  
= return period 100 years.
- 374 mm in 24 hours  
= return period 10 years  
= 1.2 month of precipitation.

24 hours cumulative rainfall obtained by Radars on April 15, 2025, showing the heavy rain over Yaté.

Source : Météo-France New Caledonia



# Flooding in Solomon Islands



**A prolonged heavy rain causing widespread flooding across Honiara, resulting in inundation and closure of roads on May 14<sup>th</sup>, 2025.**

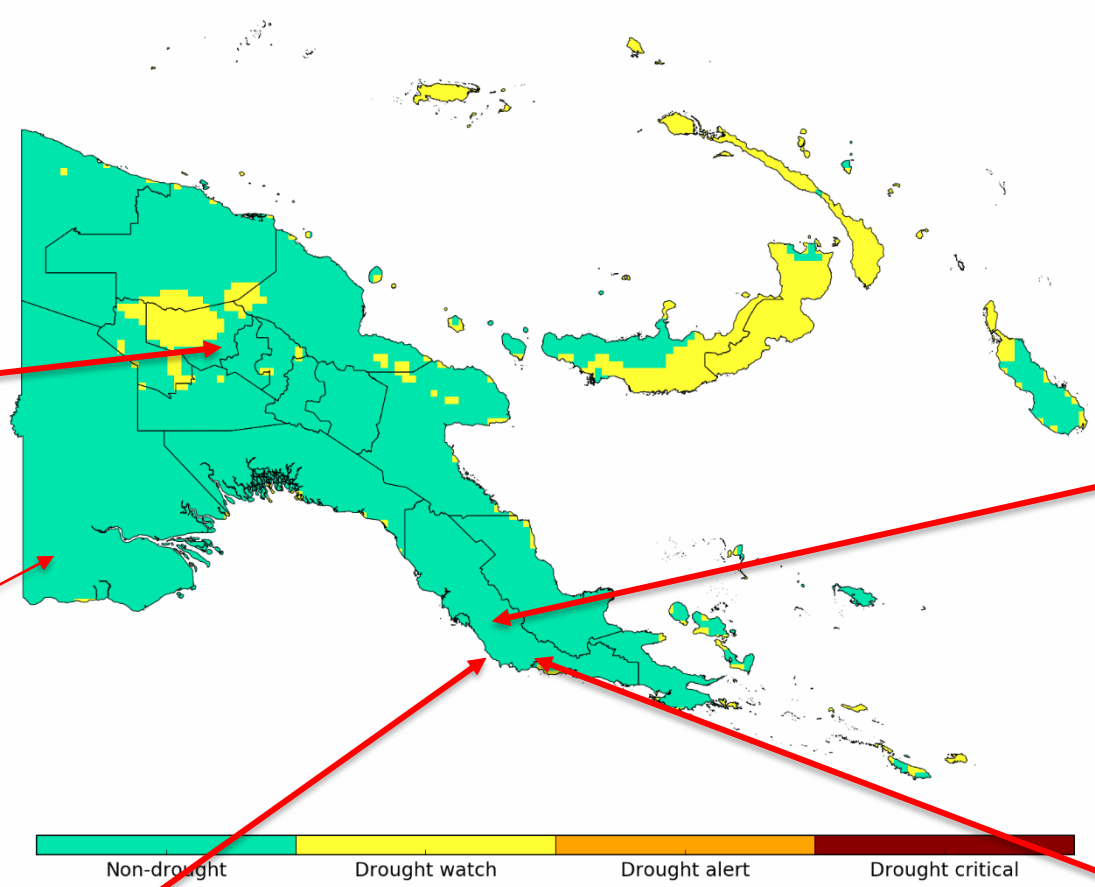
Source: Paoa FM news facebook post



# Drought Early warning Status for PNG- Past 6 months – May to October 2025 : Where there was non-drought- mostly above normal rainfall occurred causing flooding



October 2025 DEWS (6-month SPI & VHI with seasonal rainfall forecast)



Above normal rainfall causing flooding in Central province 04<sup>th</sup> May



31<sup>st</sup> May 2025 Western Province

02<sup>nd</sup> May, flooding in Rigo Central Province

Rainfall affected roads 14<sup>th</sup> May, Central





# Flooding In PNG



May 02nd 2025  
PC: Rokrok Vegatae, Source FB



Vehicle 1: transporting goods from the village

**Farmers transferring their garden  
produce from  
one vehicle to another due to flooded  
road**

Vehicle 2, transport the produce to town to be sold



# Flooding in PNG

Kandep Flooding – 17th  
October 2025 (DMT)

- Approximately 70 households (350 people) are estimated to have been severely impacted.
- Houses and personal properties inside have been washed away, including tools essential for recovery.
- Food gardens and livestock have been washed away, including numerous live animals.
- Several secondary bridges were washed away.
- The flooding has also taken away wooden canoes.
- Affected people are currently sheltering with relatives.
- Access is possible but challenging due to unsealed and flood-affected road infrastructure.





# Landslide events in Fiji

Source: Fiji Roads Authority



Landslide along Wailoa Road, Central Division, 3<sup>rd</sup> April.

Source: Fiji Roads Authority



Landslide in Namosi, Central Division, 7<sup>th</sup> April.



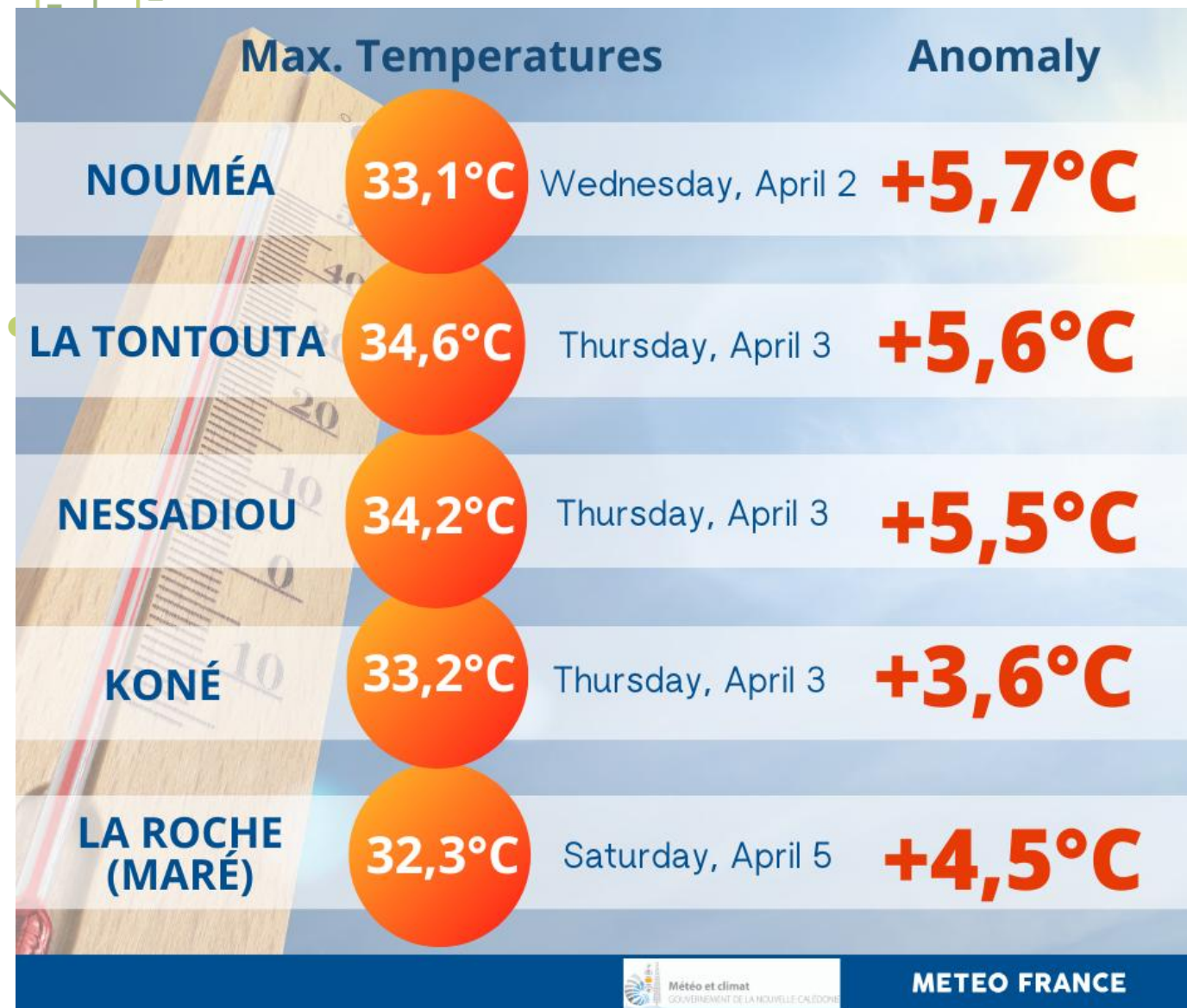
# Land Slide in Solom Islands



Heavy rain causing Land Slide destroying a Family home at Chains Valley (Borderline) Central Honiara 17<sup>th</sup> April 2025



# Heat Waves in New Caledonia



Maximum temperatures from April 2 to April 5, 2025

Date: April 2<sup>nd</sup> 5<sup>th</sup>

The southwest coast of Grande-Terre and the south of the Loyalty Islands are recording temperatures up to 4 degrees above seasonal reference.



© Archives LNC / Nicolas Petit.



# Marine heat wave in New Caledonia



- Duration : **12 days.**
- A peak of **28.7 degrees** recorded on 7th April at Anse-Vata (Nouméa) at 8 am.

Monthly monitoring of the south-western lagoon to assess the impact of marine heatwaves on lagoon ecosystems. This monitoring extends from Anse Vata Bay to the Dumbéa Pass and is based on a network of 17 stations where key physical and biological parameters are measured: temperature, salinity, oxygen, fluorescence, turbidity and pH, using CTD probes and fixed sensors.

© MaHeWa



# Bushfire and Hailstorm Observed in Vanuatu – August to October 2025



Hailstorm in Imaki, Tanna (26 August 2025)

**Source:** Facebook – community post verified by VMGD



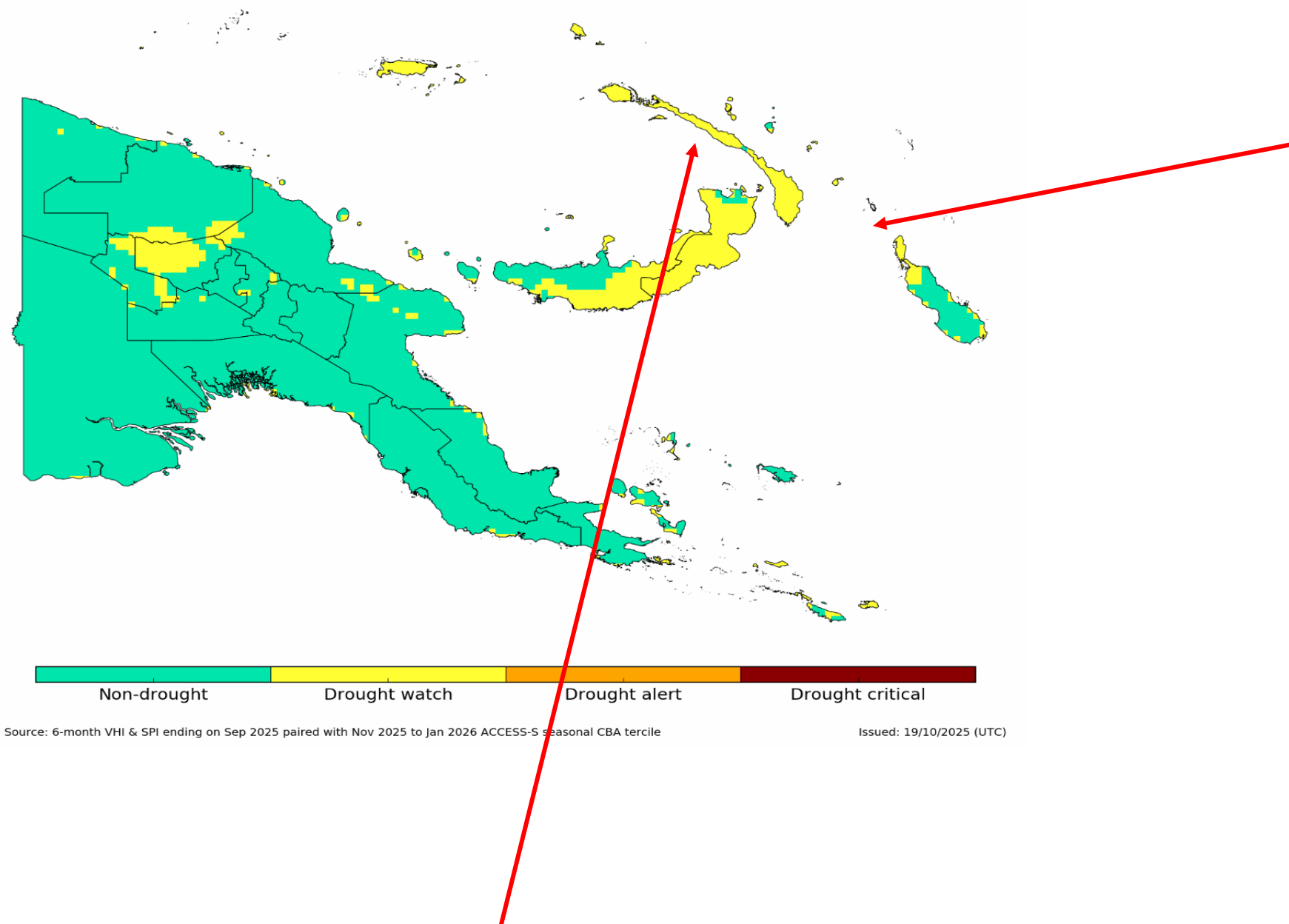
Bushfire near Port Vila (14 October 2025)

**Source:** VBTC News (2025)



# Drought In PNG

October 2025 DEWS (6-month SPI & VHI with seasonal rainfall forecast)



**New Guinea Islands and Bougainville had been experiencing dry conditions since 2024 to 2025.**



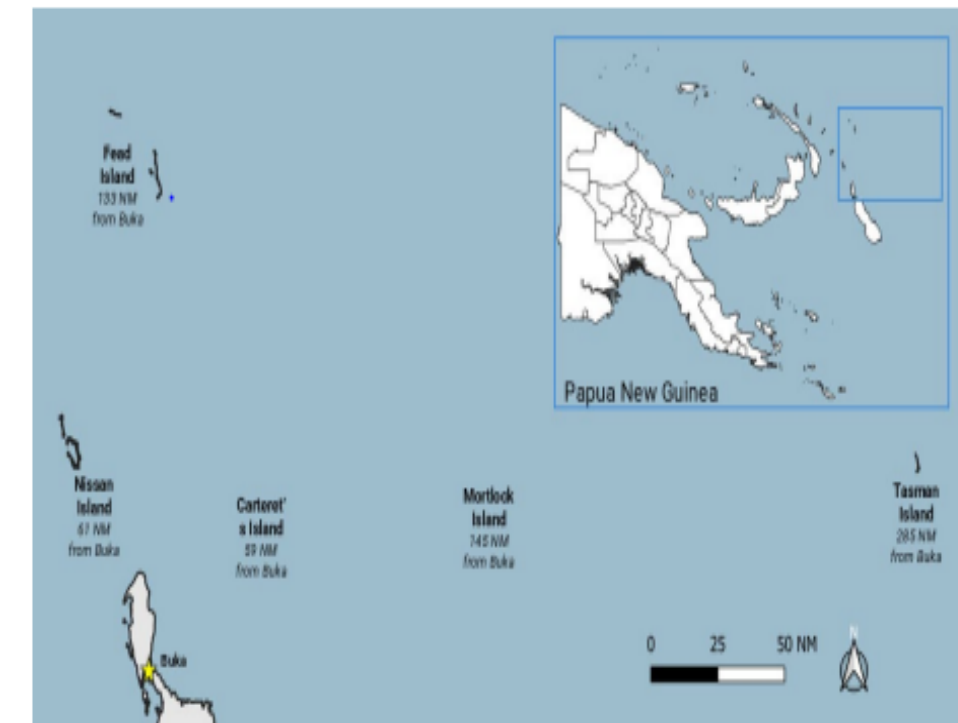
## Papua New Guinea: Drought in North Bougainville Islands, Autonomous Region of Bougainville

Disaster Management Team Situation Report No. 01, 30 March 2025

This update is produced by the Papua New Guinea Disaster Management Team (DMT) in collaboration with humanitarian partners. Sources: disaster needs assessment reports, official communications, and DMT/ISCG meeting minutes

### HIGHLIGHTS

- Continuing drought conditions have been experienced since November 2024 in Nissan, Fead, Carterets, Mortlock, and Tasman islands in North Bougainville.
- Whole communities in the five remote islands are affected, totalling 10,948 persons or 2,248 households.
- The most urgent needs include food and drinking water for 6 months, WASH, Health and

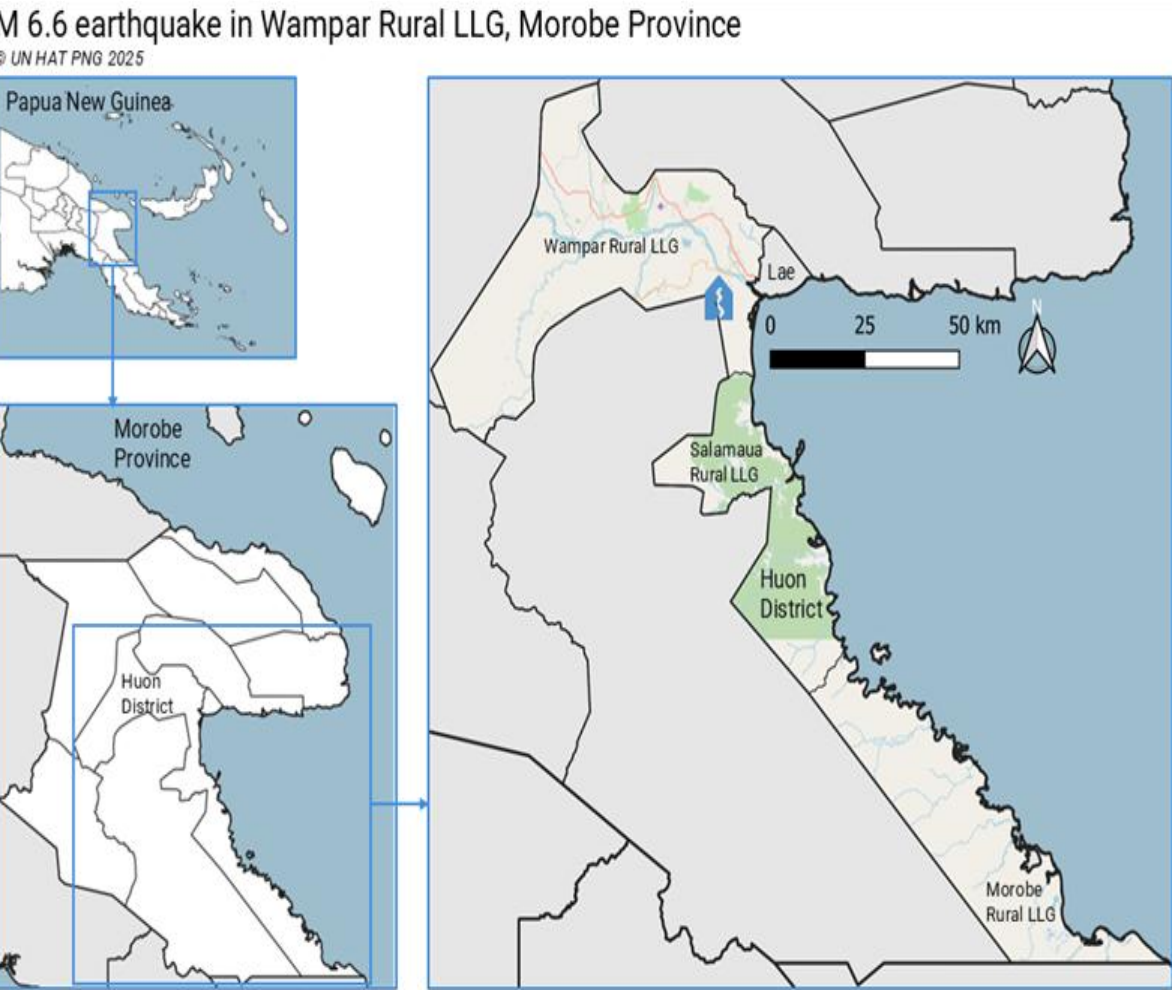


Map indicating locations of drought-affected islands @UN HAT / DMT Secretariat

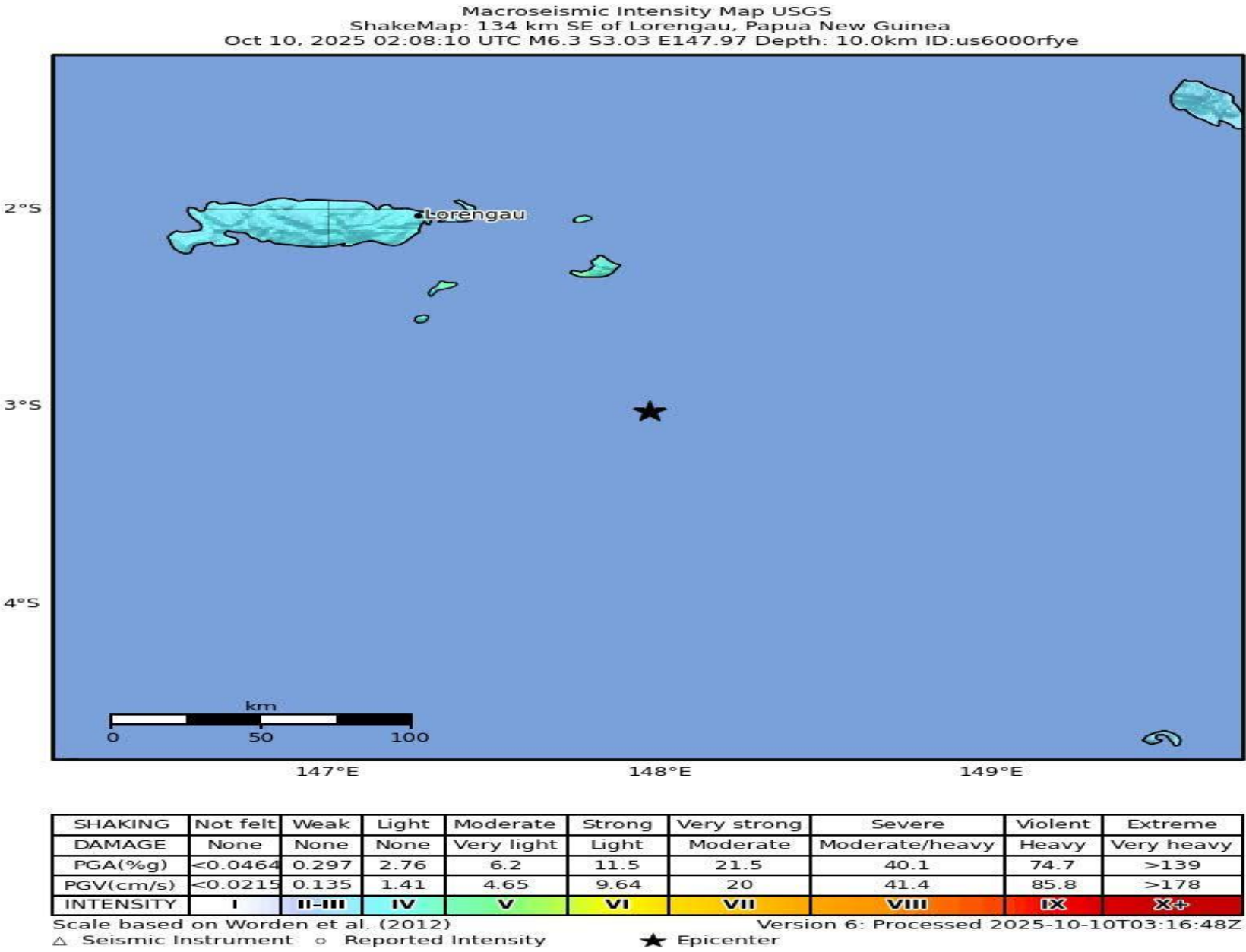


# Earthquakes in PNG

M 6.6 earthquake in Wampar, Morobe Province  
(21km West of Lae)  
Damaged homes and properties  
Date: 08/10/2025



Manus Province- No reports of major damages



Date: 10/10/25



# Summary

- ✓ In the last 6 months, ENSO was neutral in most Melanesian countries and Solomon Islands experienced a Weak La Niña phase.
- ✓ Despite an ENSO neutral status, impacts have been vast mostly due to synoptic situations (low and high pressures) and a negative IOD.
- ✓ Fiji and New Caledonia experienced heavy rainfall associated with Tropical Cyclone Tam whist PNG received most of its rainfall due to a negative IOD
- ✓ Above normal rainfall conditions have been associated with heavy rainfall leading to flooding
- ✓ Below normal rainfall conditions associated with drier conditions leading to drought
- ✓ Common hazards that occurred across the Melanesian countries include, flooding, landslide, drought, hailstorm, bushfire and earthquake,
- ✓ A vast range of sectors were affected, however the most impacted was transport, agriculture and food security.
- ✓ Despite the reported hazards and their impacts, there were nil deaths in the region



Short video taken on the 04<sup>th</sup> of May: Flooding along the Magi Hi-way, Central Province.  
Source: Kila







# THANK YOU!

TEAM MELANESIAN



**PACIFIC REGIONAL  
CLIMATE CENTRE NETWORK**