



Convention on Migratory Species (CMS or Bonn Convention)

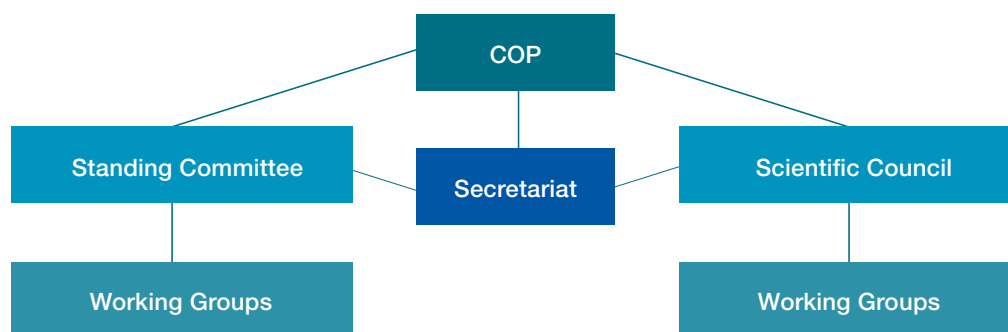
Rules of procedure

The [rules of procedure](#) for the CMS apply to any meeting of the Conference of the Parties (COP) and sets out the duties of the COP in conducting meetings.

Topics covered in the rules of procedure include:

- Representatives, observers, secretariat (Rules 1 – 4)
- Arrangements of the meeting (Rules 5 – 11)
- Officers (Rules 12 – 13)
- Rules of order and debate (Rules 14 – 17)
- Submission of documents (Rules 18 – 19)
- Voting (Rules 20 – 23)
- Parties must make every effort to reach agreement on all matters by consensus
- Votes shall be taken by a two-thirds majority of votes cast.
- Amendments

Institutional structure supporting the agreement



Conference of the Parties (COP):

The decision-making body of the Convention. It meets at three-yearly intervals.

Standing Committee (StC):

Gives policy and administrative guidance between meetings.

Scientific Council (ScC):

Meets between COP sessions to offer scientific advice and identify research and conservation priorities.

Secretariat:

Develops and promotes Agreements, services meetings, supports and supervises research and conservation projects and co-operates with governments and partner organizations. The Secretariat is provided by the United Nations Environment Programme (UNEP) and is based in Bonn, Germany and has an out-posted office in Abu Dhabi, United Arab Emirates.