

Inform – nationally, regionally, globally

Inform in our Pacific islands

Inform will help Pacific islands have reliable access to their own national datasets for environmental information, as well as a process and guide for information use standards. Capacity will be built to develop content that is then inputted into the reporting process. Additionally, the capacity of officers will be enhanced with regards to the best ways to share the information they have so it is well used by their decision makers and different communities. The information provided within the databases will also help policy development, monitoring and evaluation, and national planning.

The Inform Project is executed by SPREP through the Environmental Monitoring and Governance Programme. The project was developed as an outcome of the EU ACPMEA Project.



Inform at our Pacific regional level

Inform's work will help achieve a resilient Pacific environment, sustaining our livelihoods and natural heritage in harmony with our cultures. Inform also will help track all core priorities and the focus of SPREP for the next ten years, bringing about resilient and sustainable Pacific island communities. In Pacific island unity, the national iterations of the database will feed into a regional database for monitoring the state of the Pacific's overall environment.

Inform at a global level

Inform will help Pacific islands better fulfill their reporting obligations under multiple Multilateral Environmental Agreements and contribute to reporting on Sustainable Development Goals.

Inform

Environmental Information for Decision Making

For more information please contact:

Paul Anderson paula@sprep.org
Sela Soakai-Siaomamao selas@sprep.org

For more information on the regional data portal, please visit: www.pacific-data.sprep.org

For more information about the Inform project, please visit: <https://sprep.org/inform>



SPREP'S VISION

A resilient Pacific environment sustaining our livelihoods and natural heritage in harmony with our cultures.

PO Box 240, Apia, Samoa T +685 21929 F +685 20231 E sprep@sprep.org

www.sprep.org



Inform

Environmental Information for Decision Making



© Stuart Chape



© Niue Tourism



© Stuart Chape



Solomon Islands © Stuart Chape

What is Inform?

Knowledge and understanding are important for driving and bringing about informed decision making. The project, *Building National and Regional Capacity to Implement Multilateral Environmental Agreements by Strengthening Planning and the State of Environmental Assessment and Reporting in the Pacific*, referred to as the Inform project, recognises the need for this data-driven decision making. The project will establish a Pacific island network of national and regional data repositories and reporting tools to support the monitoring, evaluation, and analysis of environmental information, which supports environmental planning, forecasting, and reporting requirements.

Over a four-year period from 2017–2021, Inform will work in the Cook Islands, Federated States of Micronesia, Fiji, Kiribati, Republic of the Marshall Islands, Nauru, Niue, Palau, Papua New Guinea, Samoa, Solomon Islands, Tonga, Tuvalu, and Vanuatu.

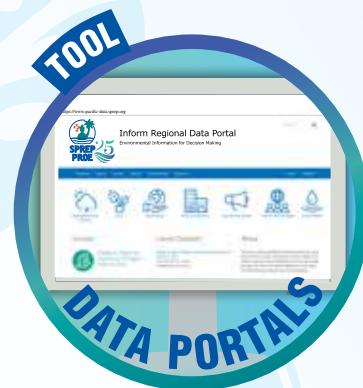
The Global Environment Facility contributes 4.3 million USD to the Inform project, which is implemented by UN Environment and executed by the Secretariat of the Pacific Regional Environment Programme (SPREP).

Why Inform?

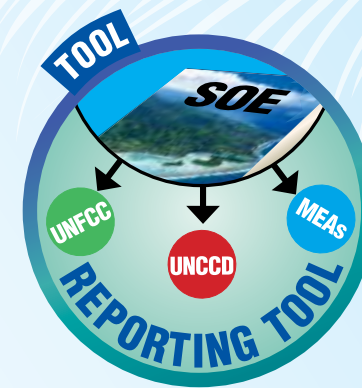
The project addresses 3 common problems and vulnerabilities in the Pacific island region:

1. The need for historical and current evidence of the status and trends of various environmental resources and drivers of environmental change
2. Challenges with information management, including the need for standard procedures for collecting and aggregating relevant environmental data
3. Lack of timely access to available information by those who need it, including local technical staff, governments, or communities and citizens, for national and international reporting and planning, and most importantly, for sound and informed decision making

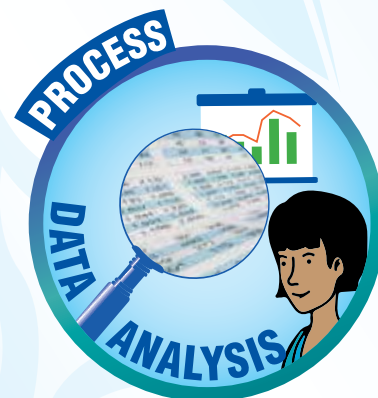
Inform has 4 products



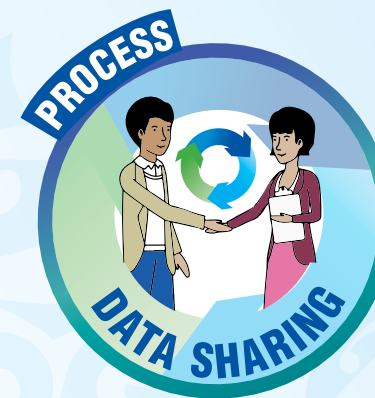
DATA PORTALS: create a network of national and regional data repositories to store and share environmental data, to monitor the state of the Pacific's environment.



REPORTING TOOL: assist Pacific islands with meeting multiple national and international reporting requirements, by reusing indicator based reporting.



DATA ANALYSIS: facilitate the use and analysis of environmental data for national planning and sustainable development.



DATA SHARING: support a change in practices to enhance the sharing of environmental data. Support legal, policy and planning frameworks.



© Stuart Chape



© Carlo Iacovino



© Carlo Iacovino