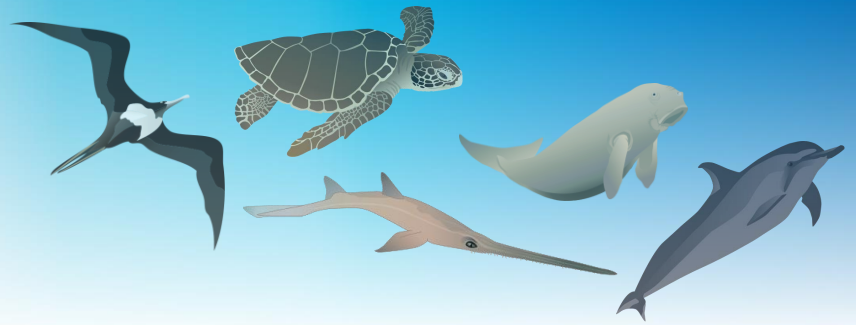




Sustainable, transformative and resilient for a **Blue Pacific**



Pacific Islands Regional Marine Species Programme

2022-2026

Housekeeping



- This webinar will be recorded and shared online
- During presentations, keep microphones on **MUTE** and camera **OFF**.
- You can post questions in the chat at any time, but we will pause periodically to address these and open the floor for questions. Please turn your camera on when asking a question if possible.
- There will be opportunities to answer questions in polls during the presentations. Questions can only be answered once so please consider your answers.
- Feel free to share other links, resources and comments via the chat.
- There will be a break half-way through.
- We will create short report summarizing results of the polls.



Sustainable, transformative and resilient for a **Blue Pacific**

Outline

- Introduction to SPREP team – Hannah Hendriks, Unity Roebeck, Karen Baird
- Global context
- About the species groups
- About the programme
- The 2020 review
- Summary of action plans
- Current and future work by SPREP
- Implementation priorities and needs
- GEF-8 STAR funding
- Other items of interest

30 SPREP PROE

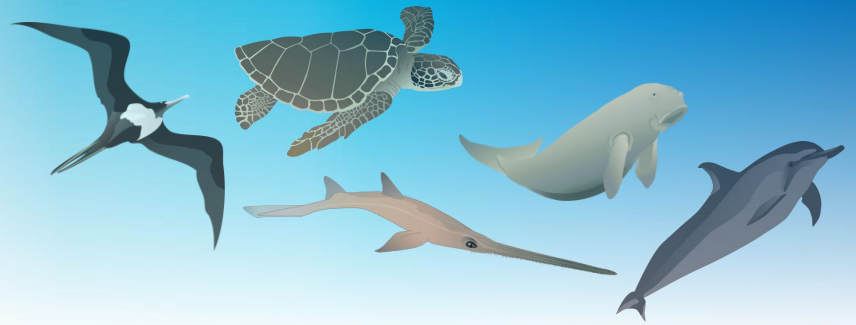
Sustainable, transformative and resilient for a Blue Pacific

Global Context



NATIONAL BIODIVERSITY STRATEGIES AND ACTION PLANS (NBSAPS)





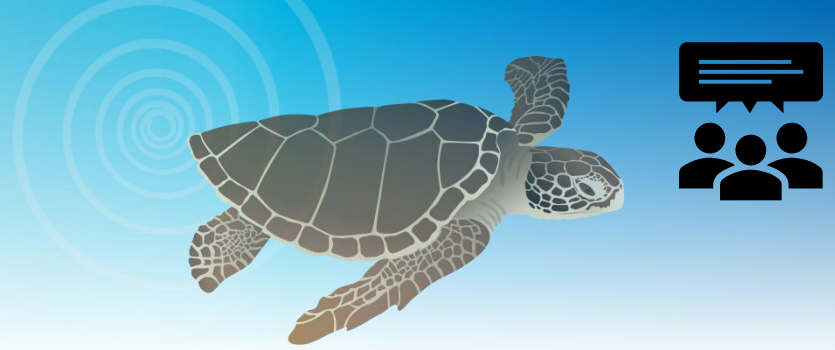
The species

- Sea turtles, seabirds, sharks and rays, whales and dolphins, and dugongs.
- Culturally important as food items, for jewellery, in art and music, and navigation.
- Tourism becoming increasingly important
- Population declines continuing



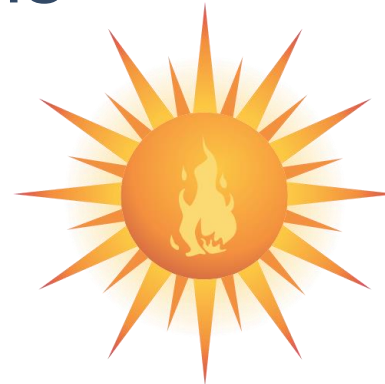
Intro to marine turtles

- 6/7 turtle species found here
- Home to significant populations of three species (green, hawksbill, loggerhead)
- Highly migratory
- Good indicators of ecosystem health
- Long-lived, high reproduction rate
- All threatened with extinction (CITES Ap I)



Key threats

- Harvesting (direct take)
- Bycatch
- Coastal development
- Pollution and pathogens
- Climate change



Intro to seabirds

- Around 40 species breeding in Pacific, more migrating through, 17 unique to region
- 11 species Threatened with extinction, 1 Near Threatened
- Locations of breeding grounds are sometimes unknown – range from high inland to coastal fringes and atolls





TABLE 1. Species of seabirds breeding or potentially breeding within the region

PACIFIC ISLAND COUNTRY OR TERRITORY

SEABIRD SPECIES	IUCN Threat	PACIFIC ISLAND COUNTRY OR TERRITORY																						
		AS	CI	FSM	FI	FP	GU	KI	MI	NA	NC	NI	NMI	PA	PNG	PI	SA	SI	TOK	TO	TU	VA	WF	
Murphy's petrel <i>Pterodroma ultima</i>	LC																							
Kermadec petrel <i>Pterodroma neglecta</i>	LC																							
Phoenix petrel <i>Pterodroma alba</i>	EN																							
Herald petrel <i>Pterodroma heraldica</i>	LC																							
Henderson petrel <i>Pterodroma atrata</i>	EN																							
White-necked petrel [†] <i>Pterodroma cervicalis</i>	VU																							
Collared petrel [†] <i>Pterodroma brevipes</i>	VU																							
Black-winged petrel <i>Pterodroma nigripennis</i>	LC																							
White-winged petrel [†] <i>Pterodroma leucoptera</i>	VU																							
Fiji petrel <i>Pseudobulweria macgillivrayi</i>	CR																							





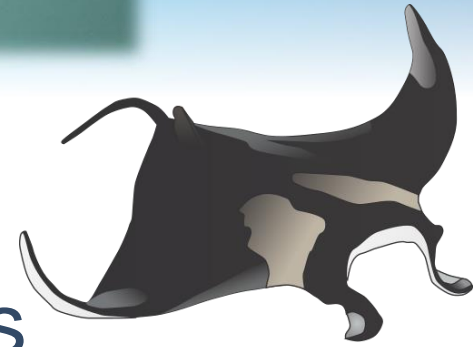
Key threats

- Invasive alien predators such as rats
- Unsustainable harvesting
- Light pollution
- Bycatch
- Habitat loss





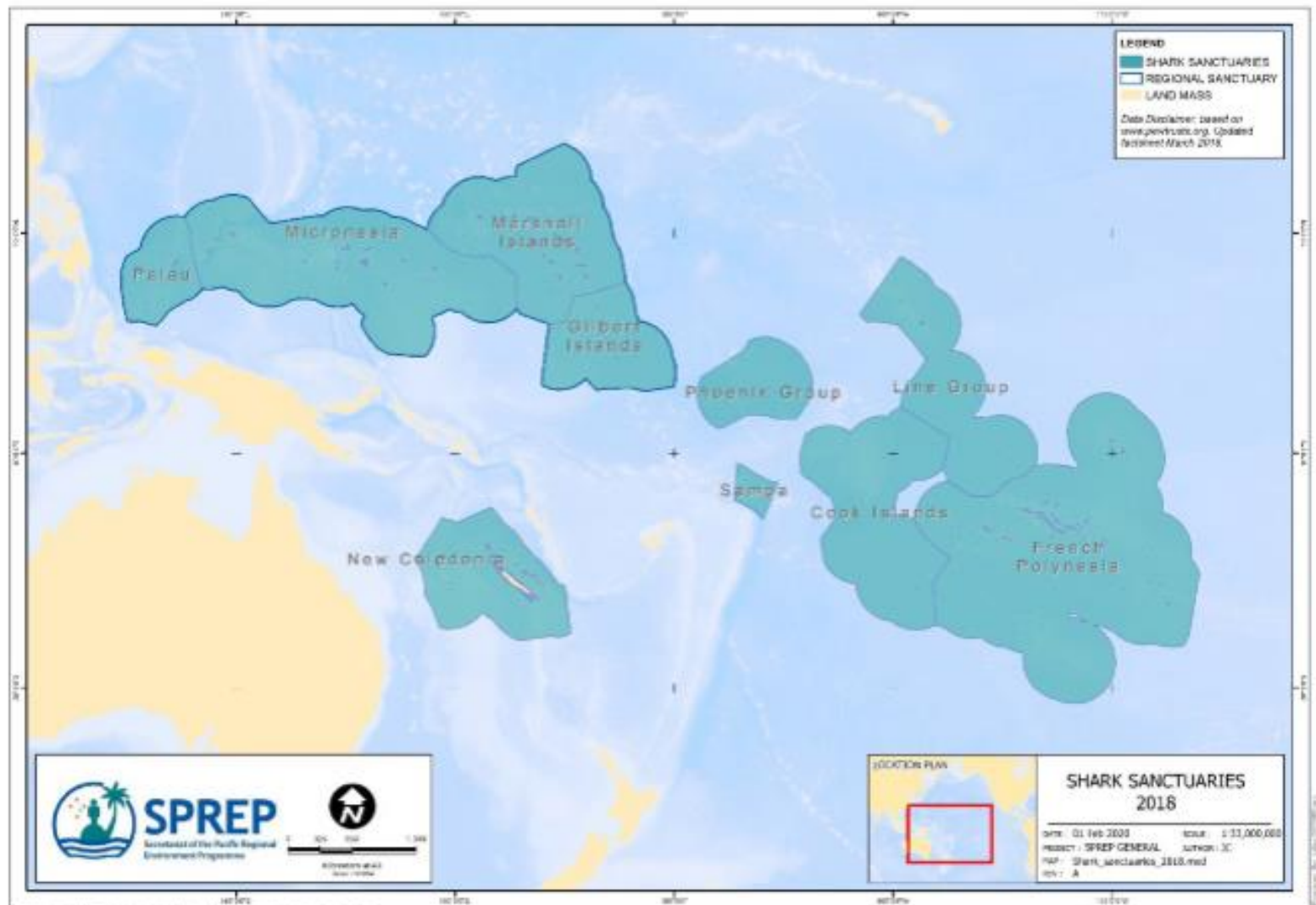
Intro to sharks and rays



- Half of assessed species listed as Threatened or Near Threatened
- At least 189 species in the region
- Grow slowly, mature late, low reproduction
- Wide range of trophic levels and habitats
- The region supports some significant populations of some rare species

30 SPREP PROE

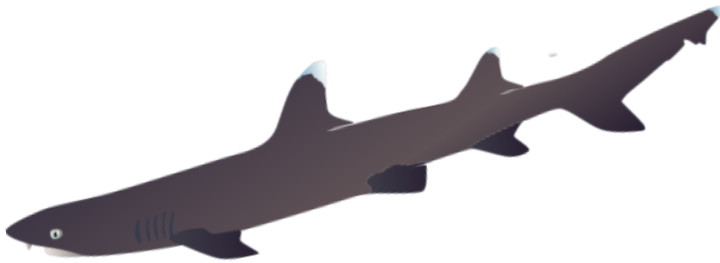
Sustainable, transformative and resilient for a Blue Pacific





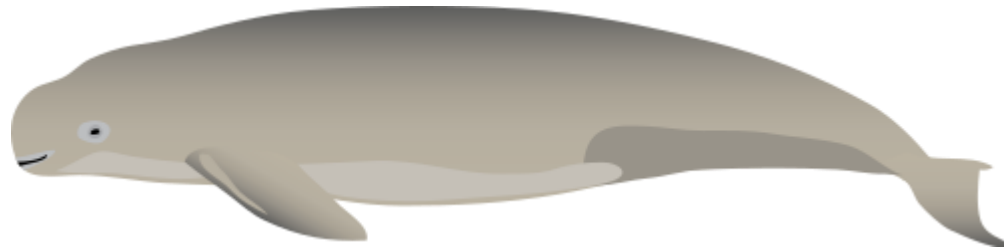
Key threats

- Targeted commercial fishing
- Artisanal fishing
- Bycatch
- Habitat loss e.g. from sedimentation



Intro to whales and dolphins

- Over half of world's known species
- Seven species are threatened with extinction
- Some migratory, some resident species



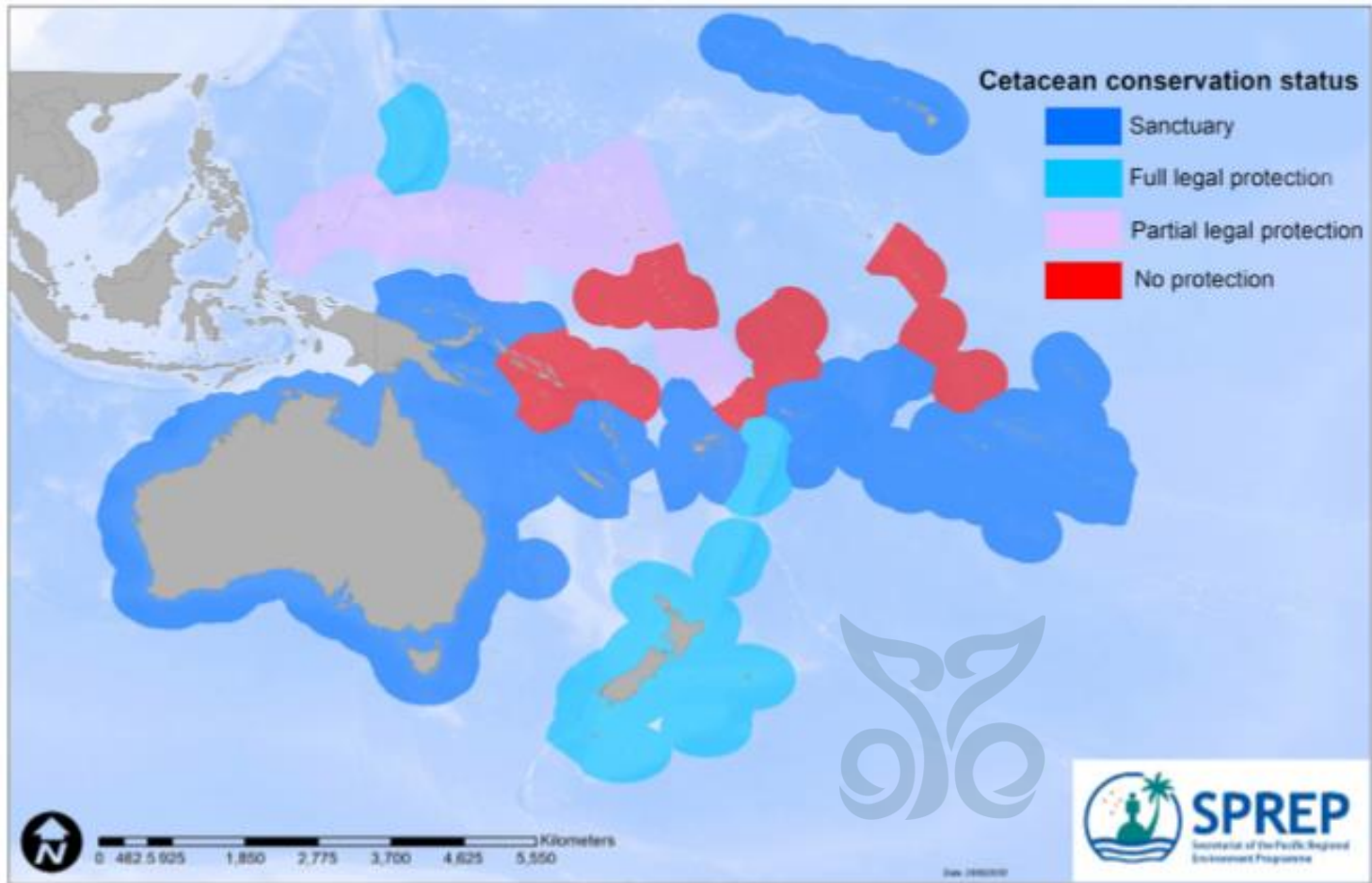
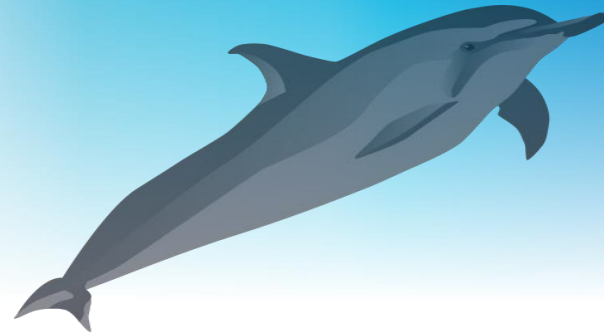


FIGURE 7. Whale and dolphin protected areas and sanctuaries. © SPREP, 2021



PACIFIC ISLAND COUNTRY OR TERRITORY

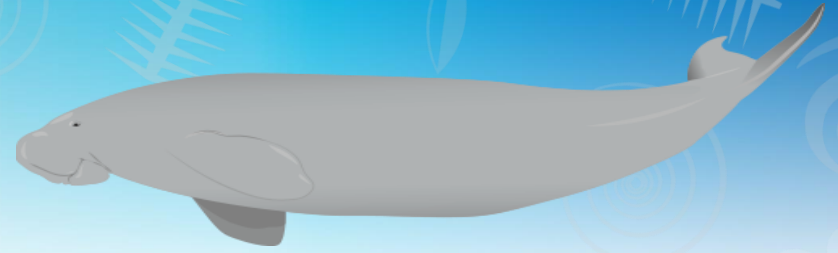
SPECIES	AS	GI	FSM	FI	FP	GU	KI	MI	NANG	NI	NMI	PA	PNG	PI	SA	SI	TOK	TO	TU	VA	WF
Australian humpback dolphin <i>Sousa sahalensis</i>														X							
Blainville's beaked whale <i>Mesoplodondensirostris</i>		X		X	X	X	X			X	X	X		?	X	?					
Blue whale <i>Balaenoptera musculus</i>				?			?	X						X		X			X		
Blue whale, Pygmy <i>B. m. brevicauda</i>		X								X											
Bottlenose dolphin <i>Tursiops spp</i>	X	?	?	X	X	X	X	X		?		X	?	X		X	X		X	X	X
Bryde's whale <i>Balaenoptera edeni</i>				X	?	X									X						



Key threats

- Incidental catch and fishing gear interactions
- Harvesting (direct take)
- Pollution
- Vessel Traffic
- Ocean-physics alteration including climate change





Intro to dugongs

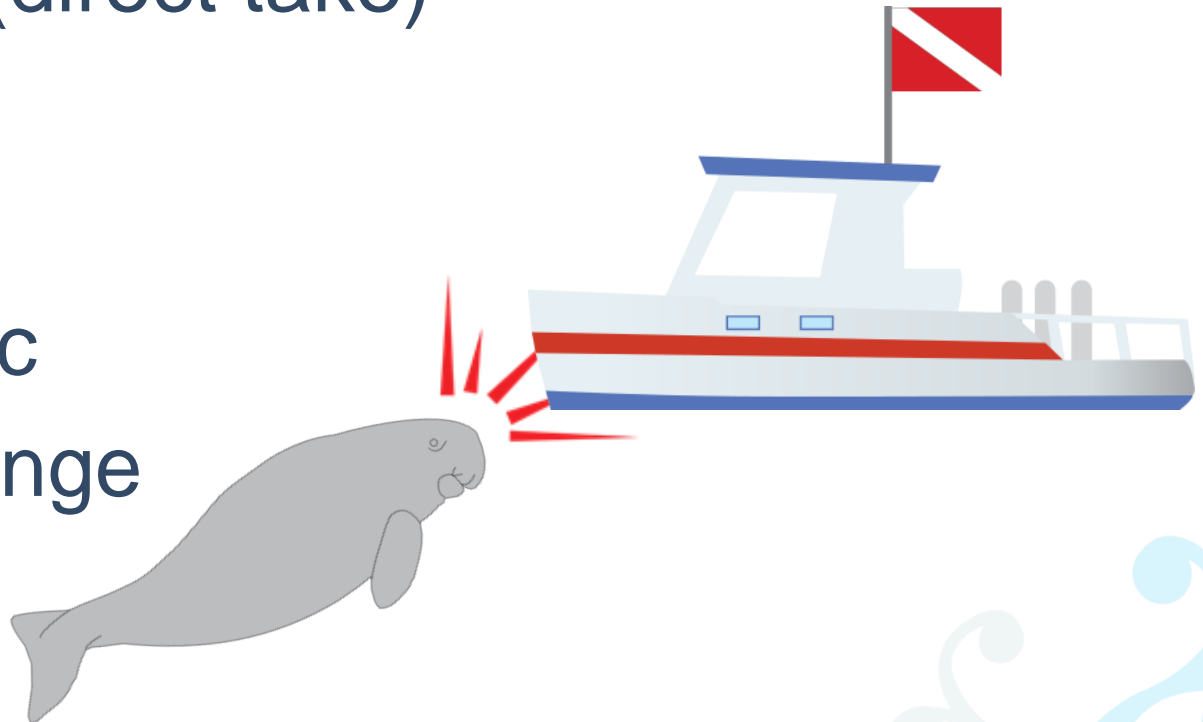
- Pacific Ocean supports some of world's largest remaining populations of dugong.
- Long-lived, low reproductive rate
- Seagrass community specialists
- Occur in Aus, NC, PA, PNG, SI, VA – largest pop in Torres Strait
- Vulnerable (IUCN), CITES Appendix 1





Key threats

- Harvesting (direct take)
- Bycatch
- Habitat loss
- Vessel traffic
- Climate change





Sustainable, transformative and resilient for a **Blue Pacific**

Pacific Islands Regional Marine Species Programme 2022-2026





The Programme

- Strategy for conserving and managing our marine megafauna.
- Supporting Pacific Island countries and territories to take a primary role in conservation.



Sustainable, transformative and resilient for a **Blue Pacific**

VISION

A healthy Pacific Ocean with thriving populations of whales, dolphins, marine turtles, dugongs, sharks and rays, and seabirds and the associated ecosystems on which they depend and contribute, which assures the aspirations of Pacific island peoples and protects their natural and cultural heritage.



SPREP's role

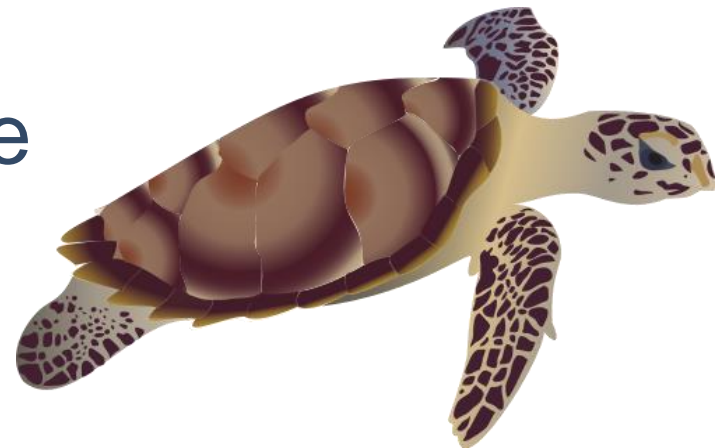
- Coordinating efforts
- Building capacity
- Securing resources
- Facilitating exchange of information
- Regularly monitoring and reporting on APs
- Threatened and Migratory Species Advisor





2020/21 Review

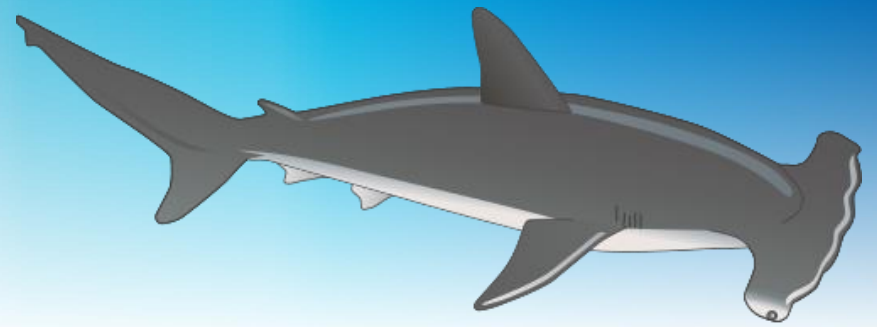
- Determine progress on implementation of the 2013-2017 Action Plans
- Identify issues and challenges with implementing the plans
- Obtain feedback about the plans in general





- Direct country engagement where possible
- Info from national strategies and action plans, State of Environment reports, national reports to CBD and CMS, conference reports, etc reports

Outcome: Implementation report



Review Recommendations

- French translation
- Simplify, reduce redundancy, ensure consistency
- Less specificity - provide guidance on what some activities might be to work towards objectives.
- Reinstate list-serve



Pacific Islands Regional
Marine Species Programme
2022–2026

- Launched 1 year ago
- Has now been translated into French
- New theme on climate change
- New Seabird Action Plan

Structure of programme

Supporting Framework

Multi-Species Action Plan

Dugongs

Seabirds

Turtles

Sharks and
Rays

Whales and
Dolphins

Supporting Framework

- A: Commitment, funding, and human resources
- B: Implementation and coordination
- C: Networking and reporting to support implementation



Sustainable, transformative and resilient for a **Blue Pacific**



Action Plans

THEMES

1. Research and monitoring
2. Climate change
3. Ecosystems and habitat protection
4. Threat reduction
5. Cultural significance and value
6. Legislation, policy, and management
7. Ecotourism and livelihoods
8. Capacity building and collaboration
9. Education, awareness, and communication

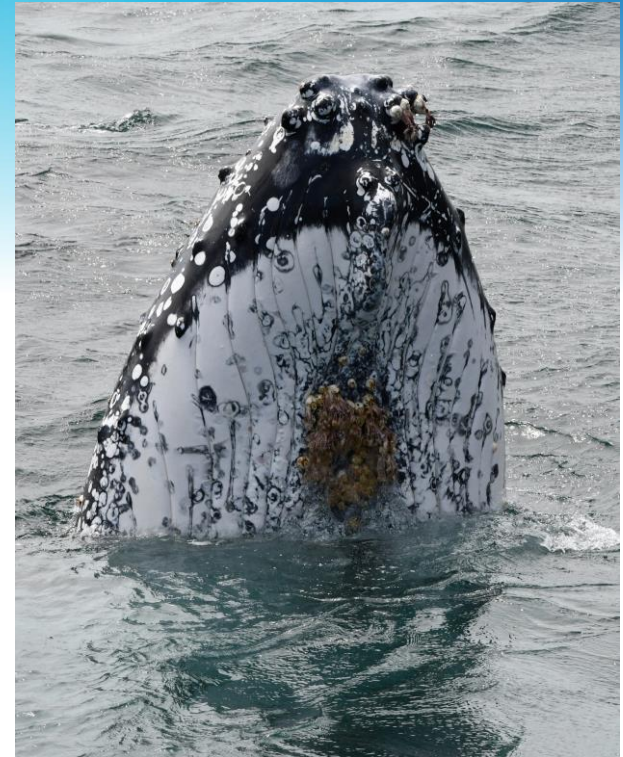


Multi-species action plan

- Provides benefits across ecosystems such as managing pollution and coastal development and climate change
- Other cross-cutting focuses on knowledge building, ecotourism, capacity building, legislation and policy, education
- Should be read in conjunction with species action plans

Species action plans

- Introduction
- Species distribution
- Species status
- Traditional knowledge and customs
- Income-generating opportunities
- Threats





Species action plans

THEME 5: CULTURAL SIGNIFICANCE AND VALUE

OBJECTIVE 1: Recognise the value of traditional knowledge, customs, and marine tenure and ensure it is incorporated into management

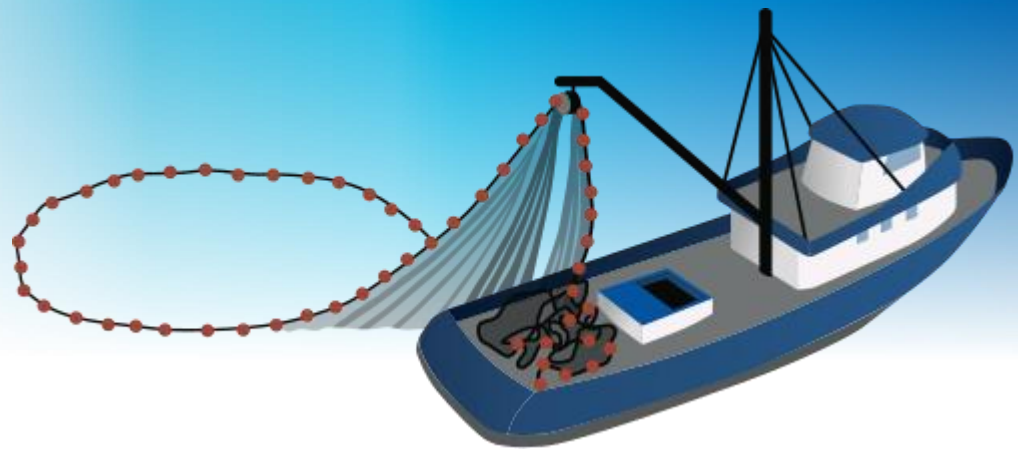
NUMBER	ACTION	RESPONSIBILITY
5.1.1	Document traditional knowledge, customs, uses and values relating to sharks and rays (and their management) for use in education and awareness-raising activities. (i)	Members, Partners, SPREP
5.1.2	Promote and support appropriate community-based conservation approaches, including improved understanding of traditional management approaches, within customary tenure frameworks that protect sharks and rays. (ii)	Members
INDICATORS		TIMEFRAME
i.	Traditional knowledge and customs on sharks and rays documented and integrated into conservation and management schemes.	2026
ii.	Appropriate community-based conservation approaches for sharks and rays supported.	2026

SPREP implementation progress

Research and monitoring

- Development of a turtle extinction risk model & lit review
- Review of Pacific Cetacean Diversity Status and Threats
- Workshops on turtles including genetics
- TRENDS updated
- UN Decade Action created to support research on marine species





Climate change

- Turtle nest temp monitoring as part of extinction risk modelling

Threat reduction

- Community use surveys on turtle use
- NPOAs developed for turtles, seabirds, sharks
- Bycatch mitigation training and capacity development for skippers, crew and observers in Fiji
- Port Based outreach programme in Suva & Vanuatu including 'kits'
- Bycatch assessment for sharks and dolphins in PNG/Kikori swim bladder fishery





Sustainable, transformative and resilient for a Blue Pacific



Cultural significance and value

- Lui Bell scholarship to study dolphin hunt in Solomon Islands
- Wedge tailed shearwater sustainability project

Legislation, policy and management

- Translation and printing of PIRMSP 2022-2026
- CITES pre-COP meeting Samoa 2022
- Vanuatu CITES leg review
- Potential eCITES implementation
- Assess Cook Islands accession to CITES





Ecotourism and livelihoods

- Regional tourism guidelines for interaction with marine species
- Guidelines for tourism operators in Vanuatu for turtles

Capacity building and collaboration

- Preparation of Pacific monitoring manuals for turtles and seabirds
- Training and capacity development
- Funding for turtle nesting beach monitoring
- Pacific Seabird Symposium combined with workshops and training



Education, awareness and communication

- Turtle public awareness campaign PNG

Threat reduction

- Assess impacts of kava cultivation on key birds in Fiji and Vanuatu
- Eradicate rats in Kiritimati - Nimroona motu's

Ecosystem and habitat protection

- Marine KBA assessment and mapping

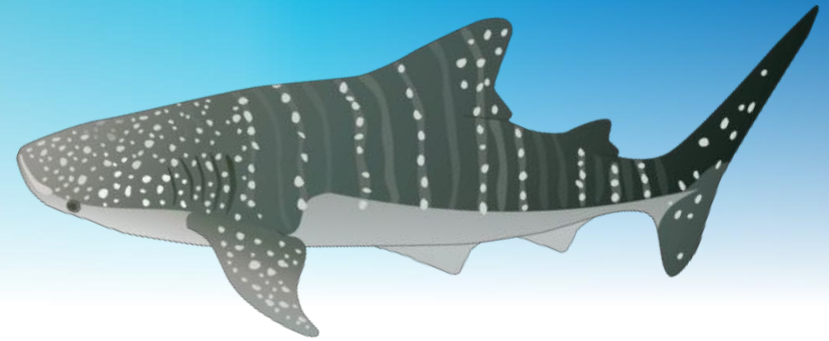




Implementation priorities and needs

- We will be running a poll during this section where you can answer some questions about your activities and future needs
- The first question is for partners, the rest are for Members





GEF-8 STAR funding

Sarah Wyatt – Global Environment
Facility (GEF), Biodiversity
Specialist



A GLOBAL PARTNERSHIP

Largest environmental multi-donor trust fund in the world

Financial mechanism of five international environmental conventions



18 IMPLEMENTING AGENCIES



United Nations
Framework Convention on
Climate Change



United Nations
Convention to Combat
Desertification



**Convention on
Biological Diversity**



**Stockholm Convention
on Persistent Organic Pollutants**



**MINAMATA
CONVENTION
ON MERCURY**

Country Allocations = STAR

System for Transparent Allocation of Resources

Example: Samoa STAR

\$8.0M, 100% increase from GEF-7 (\$4M)

- \$4M Biodiversity (BD)
- \$2M Land Degradation (LD)
- \$2M Climate Change Mitigation (CCM)

Fully Flexible – can move \$\$ between BD, LD, CCM

Complemented by set aside funds for enabling activities and special global programs

BIODIVERSITY



GOAL

Globally significant biodiversity conserved, sustainably used, and restored.

Major objectives

To improve conservation, sustainable use and restoration of natural ecosystems.

To effectively implement the Cartagena and Nagoya protocols.

To increase mobilization of domestic resources for biodiversity.

Major contributions to GEBs and MEAs

Comprehensive implementation support for the Global Biodiversity Framework

Integrated landscape/seascape management.

Domestic resource mobilization.

INTERNATIONAL WATERS



GOAL

Supporting nations in transboundary cooperation in shared marine and freshwater ecosystems through 3 step process:

- *Assess ecological & socioeconomic conditions*
- *Agree on a regional strategic action program (SAP)*
- *Implement the SAP*

Major objectives

Support **Large Marine Ecosystems** to accelerate Blue Economic Development.

Advance management in the Areas Beyond National Jurisdiction (**ABNJ**).

Enhance water security in **freshwater** ecosystems.

Major contributions to GEBs and MEAs

GEBs:

New or improved marine protected areas (**MPAs**)

More sustainable **fisheries** and aquaculture

Reduced **pollution**, including from wastewater, agricultural run-off and plastics

Strengthened **collaboration** among countries with shared water body



Sustainable, transformative and resilient for a **Blue Pacific**

Other items of interest





Databases



- TRENDS
 - <https://www.sprep.org/thetreds>
 - Contact: Unity Roebeck (unityr.ext@sprep.org)
- Strandings of Oceania
 - <https://www.sprep.org/ioe/strandings-of-oceania-database>



Upcoming webinars

- Marine mammals management toolkit – a tool for MPA managers - <https://marine-mammals.info/>
 - EU Ocean Governance Project
 - End of August
- Seabird rescue seminar series
- Strandings of Oceania
 - October



Pacific Island Round Table

- Species working group
 - Contact Karen Baird
(karenb@sprep.org)
- Nature culture working group
 - Online meeting 13 July
 - Contact James Tremlett
(jwd.tremlett@outlook.com)





Sustainable, transformative and resilient for a **Blue Pacific**

Thank you

Contact: Karen Baird (karenb@sprep.org)
Hannah Hendriks (hannahh.ext@sprep.org or
hannahhendriks08@gmail.com)
Unity Roebeck (unityr.ext@sprep.org)

Acknowledgements: Symbols courtesy of Integration and Application Network (ian.umces.edu/symbols/)



Department of
Conservation
Te Papa Atawhai

